

Unit 2852 Somerset Park Dr - Somerset Park

2852 Somerset Park Dr - 2804-2886 Somerset Park Dr, Tampa, FL, Hillsborough 33613

Unit Information

MLS Number: T3525811
 Status: ACTIVE
 Size: 1,088 Sq ft.
 Bedrooms: 2
 Full Bathrooms: 1
 Half Bathrooms: 1
 Parking Spaces:
 View:
 List Price: \$179,000
 List PPSF: \$165
 Valuated Price: \$176,000
 Valuated PPSF: \$162

The above valuated price is a baseline figure that does not take into account any specific renovation, upgrade, split, merge, or deterioration of the unit.

Building Information

Number of units: 220
 Number of active listings for rent: 0
 Number of active listings for sale: 3
 Building inventory for sale: 1%
 Number of sales over the last 12 months: 7
 Number of sales over the last 6 months: 3
 Number of sales over the last 3 months: 1

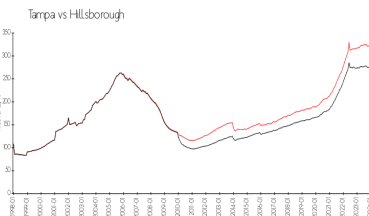
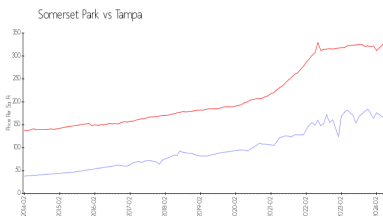
Building Association Information

Somerset Park Condominium Association
 2802 Somerset Park Dr,
 Tampa, FL 33613
 (813) 971-5443

Recent Sales

Unit #	Size	Closing Date	Sale Price	PPSF
101	742 sq ft	Apr 2024	\$134,000	\$181
101	742 sq ft	Feb 2024	\$130,000	\$175
103	1,240 sq ft	Jan 2024	\$202,000	\$163
103	742 sq ft	Nov 2023	\$136,000	\$183
202	742 sq ft	Sep 2023	\$130,000	\$175

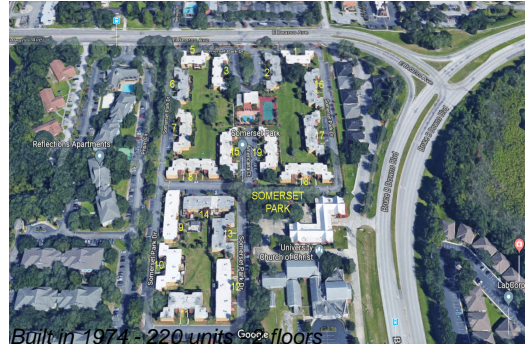
Market Information



Somerset Park: \$162/sq. ft. Tampa: \$334/sq. ft.
 Tampa: \$334/sq. ft. Hillsborough: \$261/sq. ft.

Inventory for Sale

Somerset Park 1%
 Tampa 2%
 Hillsborough 2%



Avg. Time to Close Over Last 12 Months

Somerset Park	18 days
Tampa	45 days
Hillsborough	45 days