

Unit 15814 Fishhawk Falls Dr - FishHawk Ranch Townhomes

15814 Fishhawk Falls Dr - 15810-15985 Fishhawk View Dr, Lithia, FL, Hillsborough 33547

Unit Information

MLS Number: T3527739
 Status: PENDING
 Size: 1,248 Sq ft.
 Bedrooms: 2
 Full Bathrooms: 2
 Half Bathrooms: 1
 Parking Spaces:
 View: Trees/Woods
 List Price: \$250,000
 List PPSF: \$200
 Valuated Price: \$231,000
 Valuated PPSF: \$185

The above valuated price is a baseline figure that does not take into account any specific renovation, upgrade, split, merge, or deterioration of the unit.

Building Information

Number of units: 340
 Number of active listings for rent: 0
 Number of active listings for sale: 3
 Building inventory for sale: 0%
 Number of sales over the last 12 months: 17
 Number of sales over the last 6 months: 7
 Number of sales over the last 3 months: 4

Building Association Information

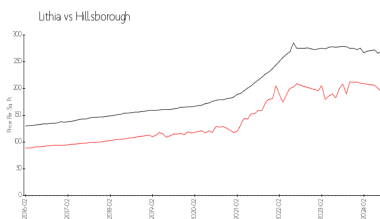
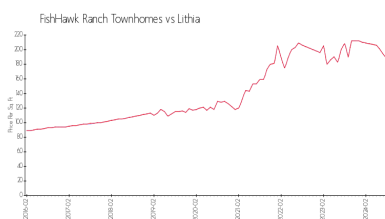
FishHawk Ranch HOA
 Rizzetta & Company, Inc.
 9428 Camden Field Parkway
 Riverview, FL 33578
 PH: 813-533-2950

<http://fishhawkcdd.org/hoa/>

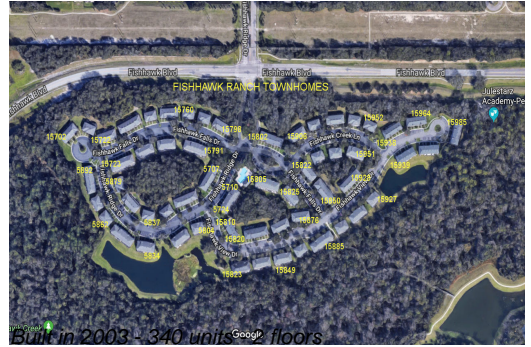
Recent Sales

Unit #	Size	Closing Date	Sale Price	PPSF
	1,248 sq ft	Aug 2024	\$255,900	\$205
	1,383 sq ft	Aug 2024	\$279,000	\$202
	1,383 sq ft	Jul 2024	\$260,000	\$188
	1,248 sq ft	Jun 2024	\$275,000	\$220
	1,383 sq ft	May 2024	\$282,000	\$204
	1,248 sq ft	May 2024	\$255,000	\$204

Market Information



FishHawk Ranch Townhomes:	\$187/sq. ft.	Lithia:	\$187/sq. ft.
Lithia:	\$187/sq. ft.	Hillsborough:	\$250/sq. ft.



Inventory for Sale

FishHawk Ranch Townhomes	1%
Lithia	1%
Hillsborough	2%

Avg. Time to Close Over Last 12 Months

FishHawk Ranch Townhomes	28 days
Lithia	28 days
Hillsborough	54 days