

# Unit 1023 - Enclave at Richmond Place

1023 - 18001 Richmond Place Dr, Tampa, FL, Hillsborough 33647

## Unit Information

MLS Number: T3528074  
 Status: ACTIVE  
 Size: 1,083 Sq ft.  
 Bedrooms: 2  
 Full Bathrooms: 2  
 Half Bathrooms: 0  
 Parking Spaces: Common, Guest, Open  
 View:  
 List Price: \$226,000  
 List PPSF: \$209  
 Valuated Price: \$215,000  
 Valuated PPSF: \$199

*The above valuated price is a baseline figure that does not take into account any specific renovation, upgrade, split, merge, or deterioration of the unit.*

## Building Information

Number of units: 280  
 Number of active listings for rent: 0  
 Number of active listings for sale: 9  
 Building inventory for sale: 3%  
 Number of sales over the last 12 months: 7  
 Number of sales over the last 6 months: 4  
 Number of sales over the last 3 months: 2

## Building Association Information

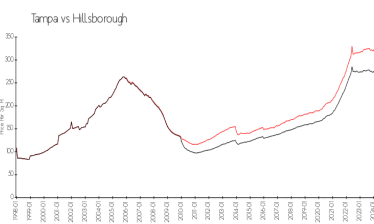
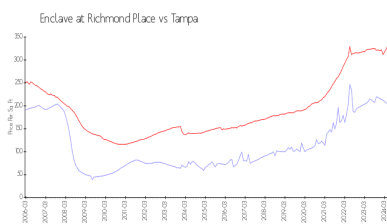
THE ENCLAVE AT RICHMOND PLACE  
 Property Management company  
 University Properties Inc  
 7001 Temple Terrace Hwy  
 Tampa, FL 33637-5734  
 (813) 980-1000

<http://www.richmondplacetampa.com/>

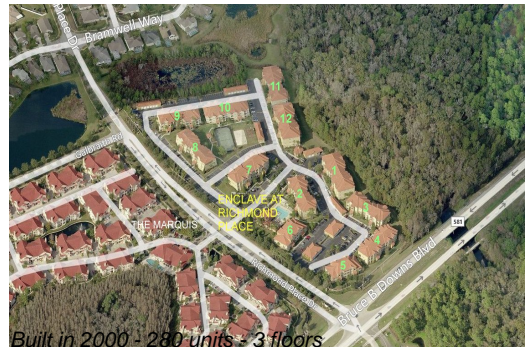
## Recent Sales

Unit #	Size	Closing Date	Sale Price	PPSF
920	1,083 sq ft	Jun 2024	\$210,000	\$194
113	1,083 sq ft	May 2024	\$242,000	\$223
330	732 sq ft	Mar 2024	\$143,000	\$195
225	732 sq ft	Jan 2024	\$180,000	\$246
337	1,083 sq ft	Oct 2023	\$233,000	\$215
1127	825 sq ft	Oct 2023	\$185,000	\$224

## Market Information



Enclave at Richmond Place: \$205/sq. ft.  
 Tampa: \$334/sq. ft.  
 Hillsborough: \$261/sq. ft.



### **Inventory for Sale**

Enclave at Richmond Place	3%
Tampa	2%
Hillsborough	2%

### **Avg. Time to Close Over Last 12 Months**

Enclave at Richmond Place	45 days
Tampa	45 days
Hillsborough	46 days