

Unit 230 - Enclave at Richmond Place

230 - 18001 Richmond Place Dr, Tampa, FL, Hillsborough 33647

Unit Information

MLS Number:	T3528090
Status:	ACTIVE
Size:	1,083 Sq ft.
Bedrooms:	2
Full Bathrooms:	2
Half Bathrooms:	0
Parking Spaces:	Common, Guest, Open
View:	
List Price:	\$221,000
List PPSF:	\$204
Valuated Price:	\$228,000
Valuated PPSF:	\$211

The above valuated price is a baseline figure that does not take into account any specific renovation, upgrade, split, merge, or deterioration of the unit.

Building Information

Number of units:	280
Number of active listings for rent:	0
Number of active listings for sale:	8
Building inventory for sale:	2%
Number of sales over the last 12 months:	7
Number of sales over the last 6 months:	4
Number of sales over the last 3 months:	2

Building Association Information

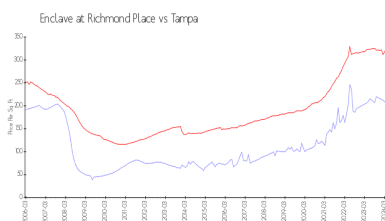
THE ENCLAVE AT RICHMOND PLACE
Property Management company
University Properties Inc
7001 Temple Terrace Hwy
Tampa, FL 33637-5734
(813) 980-1000

<http://www.richmondplacetampa.com/>

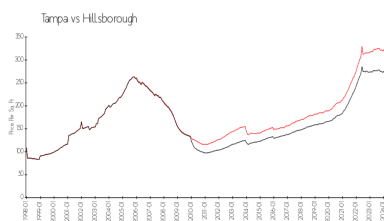
Recent Sales

Unit #	Size	Closing Date	Sale Price	PPSF
920	1,083 sq ft	Jun 2024	\$210,000	\$194
113	1,083 sq ft	May 2024	\$242,000	\$223
330	732 sq ft	Mar 2024	\$143,000	\$195
225	732 sq ft	Jan 2024	\$180,000	\$246
337	1,083 sq ft	Oct 2023	\$233,000	\$215
1127	825 sq ft	Oct 2023	\$185,000	\$224

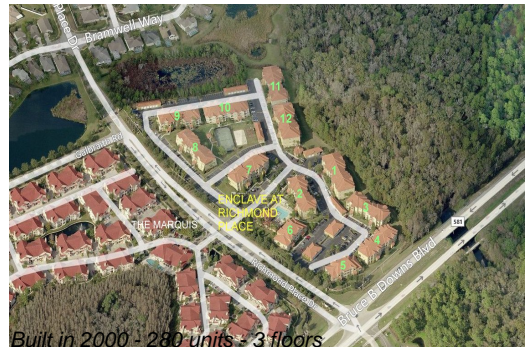
Market Information



Enclave at Richmond Place: \$205/sq. ft.
Tampa: \$334/sq. ft.



Tampa: \$334/sq. ft.
Hillsborough: \$261/sq. ft.



Inventory for Sale

Enclave at Richmond Place	3%
Tampa	2%
Hillsborough	2%

Avg. Time to Close Over Last 12 Months

Enclave at Richmond Place	45 days
Tampa	45 days
Hillsborough	46 days