

Unit 2810 Somerset Park Dr # 101 - Somerset Park

2810 Somerset Park Dr # 101 - 2804-2886 Somerset Park Dr, Tampa, FL, Hillsborough 33613

Unit Information

MLS Number:	T3532321
Status:	Leased
Size:	770 Sq ft.
Bedrooms:	1
Full Bathrooms:	1
Half Bathrooms:	0
Parking Spaces:	
View:	
List Price:	\$1,200
List PPSF:	\$2
Valuated Price:	\$46,000
Valuated PPSF:	\$62

The above valuated price is a baseline figure that does not take into account any specific renovation, upgrade, split, merge, or deterioration of the unit.

Building Information

Number of units:	220
Number of active listings for rent:	0
Number of active listings for sale:	5
Building inventory for sale:	2%
Number of sales over the last 12 months:	4
Number of sales over the last 6 months:	1
Number of sales over the last 3 months:	0

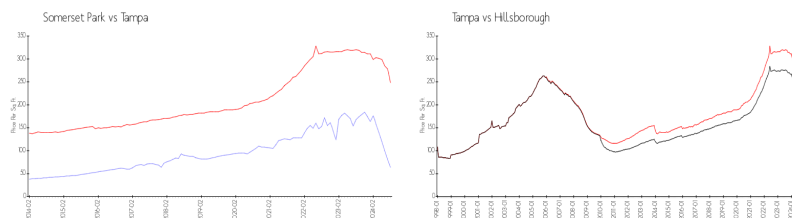
Building Association Information

Somerset Park Condominium Association
2802 Somerset Park Dr,
Tampa, FL 33613
(813) 971-5443

Recent Sales

Unit #	Size	Closing Date	Sale Price	PPSF
101	742 sq ft	Apr 2024	\$134,000	\$181
101	742 sq ft	Feb 2024	\$130,000	\$175
103	1,240 sq ft	Jan 2024	\$202,000	\$163
103	742 sq ft	Nov 2023	\$136,000	\$183

Market Information

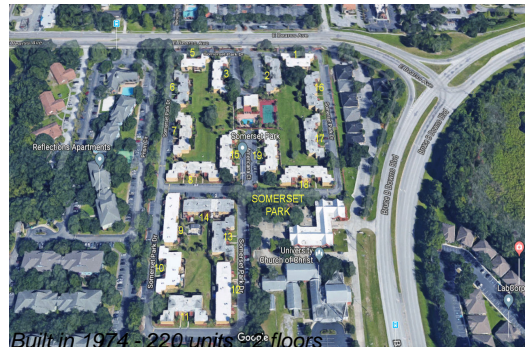


Somerset Park:	\$64/sq. ft.	Tampa:	\$248/sq. ft.
Tampa:	\$248/sq. ft.	Hillsborough:	\$190/sq. ft.

Inventory for Sale

Somerset Park	2%
Tampa	2%
Hillsborough	2%

Avg. Time to Close Over Last 12 Months



Somerset Park
Tampa
Hillsborough

28 days
54 days
55 days