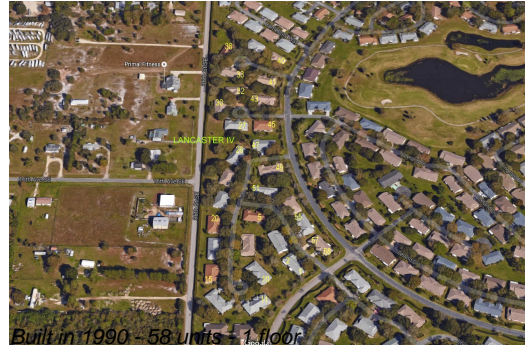


# Unit 1606 Laughton Pl # 3 - Lancaster IV

1606 Laughton Pl # 3 - 2501-2531 Lynx Rd, Sun City Center, FL, Hillsborough 33573

## Unit Information

MLS Number:	T3536488
Status:	ACTIVE
Size:	1,878 Sq ft.
Bedrooms:	2
Full Bathrooms:	2
Half Bathrooms:	0
Parking Spaces:	
View:	
List Price:	\$239,900
List PPSF:	\$128
Valuated Price:	\$255,000
Valuated PPSF:	\$136



The above valuated price is a baseline figure that does not take into account any specific renovation, upgrade, split, merge, or deterioration of the unit.

## Building Information

Number of units:	58
Number of active listings for rent:	0
Number of active listings for sale:	4
Building inventory for sale:	6%
Number of sales over the last 12 months:	0
Number of sales over the last 6 months:	0
Number of sales over the last 3 months:	0

## Building Association Information

### Sun City Center Community Association

1009 North Pebble Beach Blv

Sun City Center

Ph: 813-633-3500

URL: <http://www.suncitycenter.org/association.html>

### Kings Point Community

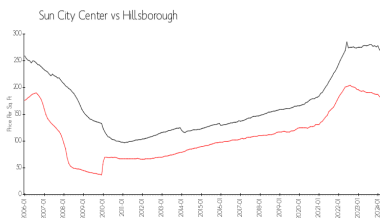
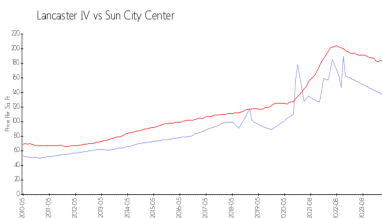
1904 Clubhouse Dr

Sun City Center

Ph: 813-642-8790

URL: <http://kpscc.com/>

## Market Information



Lancaster IV:	\$136/sq. ft.	Sun City Center:	\$183/sq. ft.
Sun City Center:	\$183/sq. ft.	Hillsborough:	\$255/sq. ft.

## Inventory for Sale

Lancaster IV	7%
Sun City Center	3%
Hillsborough	2%

## Avg. Time to Close Over Last 12 Months

Lancaster IV	n/a
--------------	-----

Sun City Center  
Hillsborough

59 days  
49 days