

Unit 15838 Fishhawk Falls Dr - FishHawk Ranch Townhomes

15838 Fishhawk Falls Dr - 15810-15985 Fishhawk View Dr, Lithia, FL, Hillsborough 33547

Unit Information

MLS Number:	T3539525
Status:	ACTIVE
Size:	1,247 Sq ft.
Bedrooms:	2
Full Bathrooms:	2
Half Bathrooms:	1
Parking Spaces:	
View:	
List Price:	\$258,000
List PPSF:	\$207
Valuated Price:	\$252,000
Valuated PPSF:	\$202

The above valuated price is a baseline figure that does not take into account any specific renovation, upgrade, split, merge, or deterioration of the unit.

Building Information

Number of units:	340
Number of active listings for rent:	0
Number of active listings for sale:	2
Building inventory for sale:	0%
Number of sales over the last 12 months:	15
Number of sales over the last 6 months:	4
Number of sales over the last 3 months:	4

Building Association Information

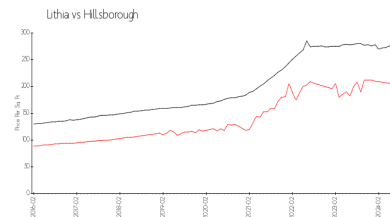
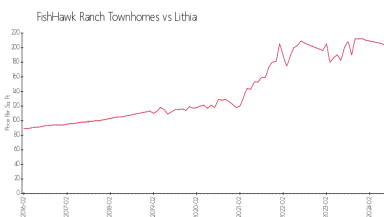
FishHawk Ranch HOA
 Rizzetta & Company, Inc.
 9428 Camden Field Parkway
 Riverview, FL 33578
 PH: 813-533-2950

<http://fishhawkcdd.org/hoa/>

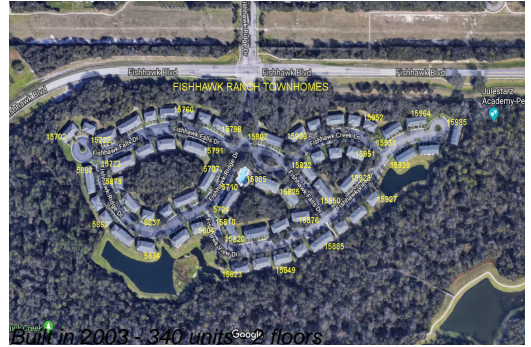
Recent Sales

Unit #	Size	Closing Date	Sale Price	PPSF
	1,248 sq ft	Jun 2024	\$275,000	\$220
	1,383 sq ft	May 2024	\$282,000	\$204
	1,248 sq ft	May 2024	\$255,000	\$204
	1,248 sq ft	Apr 2024	\$240,000	\$192
	1,248 sq ft	Jan 2024	\$250,000	\$200

Market Information



FishHawk Ranch Townhomes:	\$204/sq. ft.	Lithia:	\$204/sq. ft.
Lithia:	\$204/sq. ft.	Hillsborough:	\$255/sq. ft.



Inventory for Sale

FishHawk Ranch Townhomes	1%
Lithia	1%
Hillsborough	2%

Avg. Time to Close Over Last 12 Months

FishHawk Ranch Townhomes	24 days
Lithia	24 days
Hillsborough	49 days