

Unit 6724 Eagle Feather Dr - Eagle Palm I

6724 Eagle Feather Dr - 6704-6762 Eagle Feather Dr, Riverview, FL, Hillsborough 33578

Unit Information

MLS Number: T3544155
Status: Active
Size: 1,609 Sq ft.
Bedrooms: 3
Full Bathrooms: 2
Half Bathrooms: 1
Parking Spaces: Driveway
View:
List Price: \$300,000
List PPSF: \$186
Valuated Price: \$246,000
Valuated PPSF: \$153

The above valuated price is a baseline figure that does not take into account any specific renovation, upgrade, split, merge, or deterioration of the unit.

Building Information

Number of units: 147
Number of active listings for rent: 0
Number of active listings for sale: 7
Building inventory for sale: 4%
Number of sales over the last 12 months: 4
Number of sales over the last 6 months: 1
Number of sales over the last 3 months: 0

Building Association Information

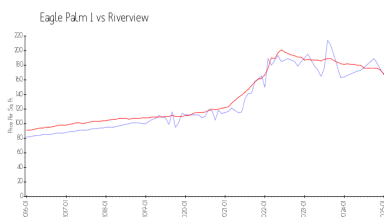
EAGLE PALMS HOA
6704 Breezy Palm Dr
Riverview, Florida FL33578
Phone +1 813-671-5200
Condominium Management
EaglePalmsHOA@condogrp.com
Office: 813-574-7835
After hours: 727-381-1717

<http://eaglepalmshoa.com/>

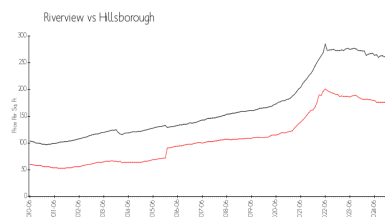
Recent Sales

Unit #	Size	Closing Date	Sale Price	PPSF
	1,298 sq ft	Oct 2024	\$245,000	\$189
	1,864 sq ft	Jun 2024	\$280,000	\$150
	1,298 sq ft	Jun 2024	\$255,000	\$196
	1,609 sq ft	May 2024	\$295,000	\$183

Market Information



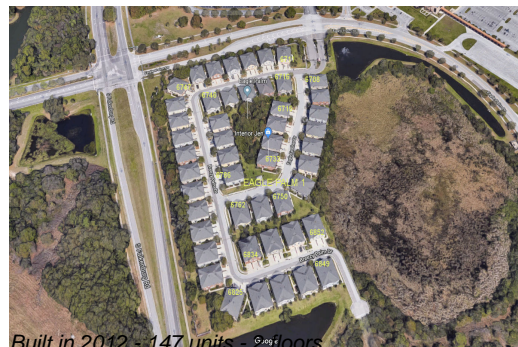
Eagle Palm I: \$153/sq. ft.
Riverview: \$162/sq. ft.



Riverview: \$162/sq. ft.
Hillsborough: \$244/sq. ft.

Inventory for Sale

Eagle Palm I 5%



Built in 2012 - 147 units - 6-8 floors

Riverview	4%
Hillsborough	4%

Avg. Time to Close Over Last 12 Months

Eagle Palm I	26 days
Riverview	61 days
Hillsborough	73 days