

Unit 1609 Laughton Pl # 54 - Lancaster IV

1609 Laughton Pl # 54 - 2501-2531 Lynx Rd, Sun City Center, FL, Hillsborough 33573

Unit Information

MLS Number: TB8410914
Status: ACTIVE
Size: 1,444 Sq ft.
Bedrooms: 2
Full Bathrooms: 2
Half Bathrooms: 0
Parking Spaces: 0
View:
List Price: \$235,000
List PPSF: \$163
Valuated Price: \$220,000
Valuated PPSF: \$152

The above valuated price is a baseline figure that does not take into account any specific renovation, upgrade, split, merge, or deterioration of the unit.

Building Information

Number of units: 58
Number of active listings for rent: 0
Number of active listings for sale: 6
Building inventory for sale: 10%
Number of sales over the last 12 months: 5
Number of sales over the last 6 months: 2
Number of sales over the last 3 months: 1

Building Association Information

Sun City Center Community Association

1009 North Pebble Beach Blv

Sun City Center

Ph: 813-633-3500

URL: <http://www.suncitycenter.org/association.html>

Kings Point Community

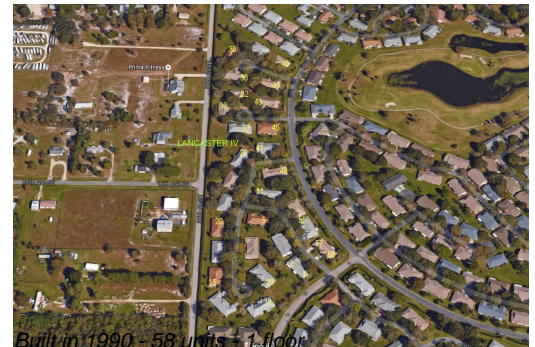
1904 Clubhouse Dr

Sun City Center

Ph: 813-642-8790

URL: <http://kpscc.com/>

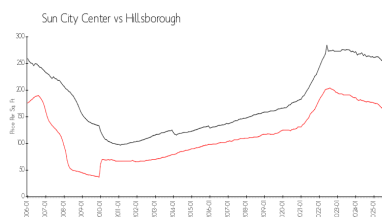
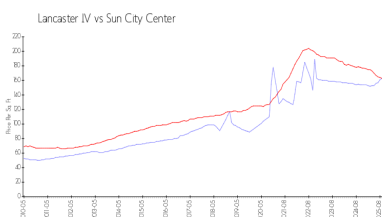
https://



Recent Sales

Unit #	Size	Closing Date	Sale Price	PPSF
	1,440 sq ft	Sep 2025	\$235,000	\$163
	1,878 sq ft	Jul 2025	\$188,000	\$100
	1,661 sq ft	Apr 2025	\$225,000	\$135
0	1,584 sq ft	Apr 2025	\$245,000	\$155
20	1,584 sq ft	Mar 2025	\$180,000	\$114

Market Information



Lancaster IV: \$152/sq. ft.
Sun City Center: \$158/sq. ft.

Sun City Center: \$158/sq. ft.
Hillsborough: \$229/sq. ft.

Inventory for Sale

Lancaster IV	10%
Sun City Center	6%
Hillsborough	5%

Avg. Time to Close Over Last 12 Months

Lancaster IV	129 days
Sun City Center	107 days
Hillsborough	89 days