

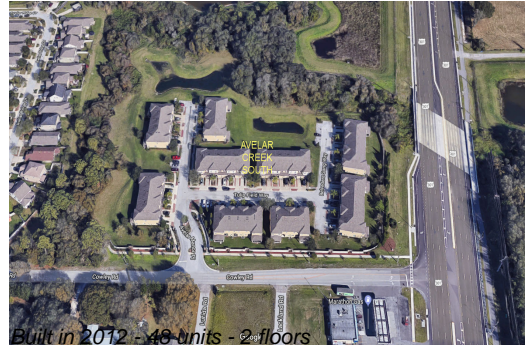
Unit 10414 Tulip Field Way - Avelar Creek South

10414 Tulip Field Way - 10402-10424 Tulip Field Wy, Riverview, FL, Hillsborough 33578

Unit Information

| | |
|-----------------|--------------|
| MLS Number: | TB8450851 |
| Status: | ACTIVE |
| Size: | 1,832 Sq ft. |
| Bedrooms: | 3 |
| Full Bathrooms: | 2 |
| Half Bathrooms: | 1 |
| Parking Spaces: | |
| View: | |
| Rental Price: | \$2,150 |
| List PPSF: | \$1 |
| Valuated Price: | \$284,000 |
| Valuated PPSF: | \$155 |

The above valuated price is a baseline figure that does not take into account any specific renovation, upgrade, split, merge, or deterioration of the unit.



Building Information

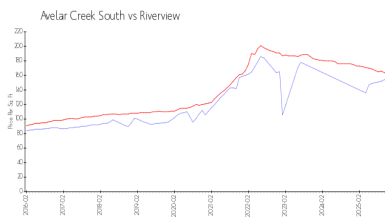
| | |
|--|----|
| Number of units: | 48 |
| Number of active listings for rent: | 0 |
| Number of active listings for sale: | 3 |
| Building inventory for sale: | 6% |
| Number of sales over the last 12 months: | 3 |
| Number of sales over the last 6 months: | 1 |
| Number of sales over the last 3 months: | 0 |

Building Association Information

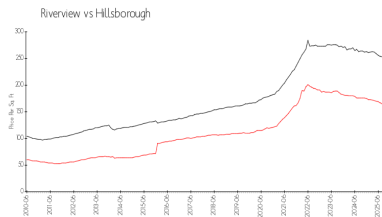
Avelar Creek South Homeowners
The Melrose Management Partnership
3527 Palm Harbor Blvd
Palm Harbor, FL 34683
727-787-3461 (phone)

<https://melrosecorporation.com/avelar-creek-south/>

Market Information



Avelar Creek South: \$155/sq. ft.
Riverview: \$161/sq. ft.



Riverview: \$161/sq. ft.
Hillsborough: \$229/sq. ft.

Inventory for Sale

| | |
|--------------------|----|
| Avelar Creek South | 6% |
| Riverview | 4% |
| Hillsborough | 5% |

Avg. Time to Close Over Last 12 Months

| | |
|--------------------|----------|
| Avelar Creek South | 169 days |
| Riverview | 71 days |
| Hillsborough | 89 days |