

Unit 1311 New Bedford Dr # 1C - St George A-B&C

1311 New Bedford Dr # 1C - 1301-1359 New Bedford Dr, Sun City Center, FL, Hillsborough 33573

Unit Information

MLS Number: TB8456374
 Status: ACTIVE
 Size: 992 Sq ft.
 Bedrooms: 2
 Full Bathrooms: 2
 Half Bathrooms: 0
 Parking Spaces:
 View:
 Rental Price: \$1,950
 List PPSF: \$2
 Valuated Price: \$204,000
 Valuated PPSF: \$206

The above valuated price is a baseline figure that does not take into account any specific renovation, upgrade, split, merge, or deterioration of the unit.

Building Information

Number of units: 62
 Number of active listings for rent: 0
 Number of active listings for sale: 2
 Building inventory for sale: 3%
 Number of sales over the last 12 months: 2
 Number of sales over the last 6 months: 1
 Number of sales over the last 3 months: 0

Building Association Information

Sun City Center Community Association

1009 North Pebble Beach Blv

Sun City Center

Ph: 813-633-3500

URL: <http://www.suncitycenter.org/association.html>

Kings Point Community

1904 Clubhouse Dr

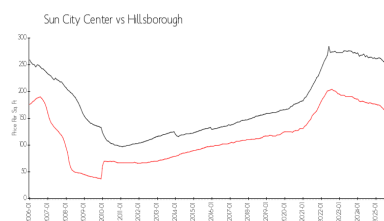
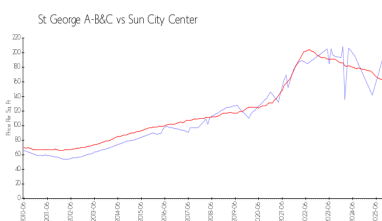
Sun City Center

Ph: 813-642-8790

URL: <http://kpscc.com/>

https://

Market Information

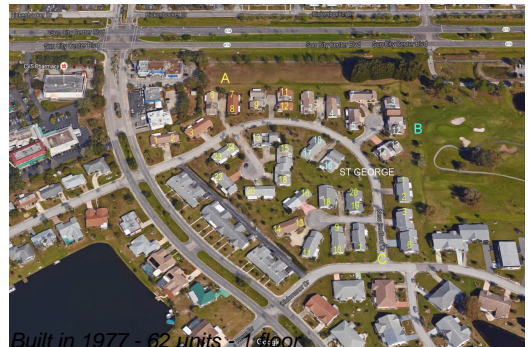


St George A-B&C: \$206/sq. ft.
 Sun City Center: \$158/sq. ft.

Sun City Center: \$158/sq. ft.
 Hillsborough: \$229/sq. ft.

Inventory for Sale

St George A-B&C: 3%
 Sun City Center: 6%
 Hillsborough: 5%



Avg. Time to Close Over Last 12 Months

St George A-B&C	131 days
Sun City Center	107 days
Hillsborough	89 days