

Unit 2802-T2 - Towers of Channelside 2

2802-T2 - 445 S 12th St, Tampa, FL, Hillsborough 33602

Unit Information

MLS Number: U8219696
 Status: ACTIVE
 Size: 4,558 Sq ft.
 Bedrooms: 3
 Full Bathrooms: 3
 Half Bathrooms: 1
 Parking Spaces: Assigned, Covered, Garage Door Opener, Guest, Split Garage, Under Building
 View: City, Pool, Water
 List Price: \$4,590,000
 List PPSF: \$1,007
 Valuated Price: \$4,357,000
 Valuated PPSF: \$1,036

The above valuated price is a baseline figure that does not take into account any specific renovation, upgrade, split, merge, or deterioration of the unit.

Building Information

Number of units: 139
 Number of active listings for rent: 0
 Number of active listings for sale: 4
 Building inventory for sale: 2%
 Number of sales over the last 12 months: 3
 Number of sales over the last 6 months: 2
 Number of sales over the last 3 months: 2

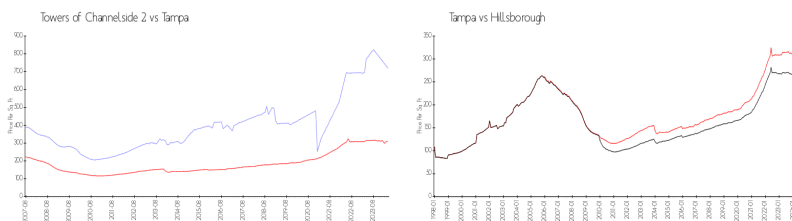
Building Association Information

Channelside Condo Assoc
 202 N 11th St
 Tampa, FL 33602
 (813) 223-3243

Recent Sales

Unit #	Size	Closing Date	Sale Price	PPSF
2304	1,767 sq ft	Mar 2024	\$1,000,000	\$566
804	1,363 sq ft	Mar 2024	\$810,000	\$594
1104	1,767 sq ft	Aug 2023	\$1,200,000	\$679

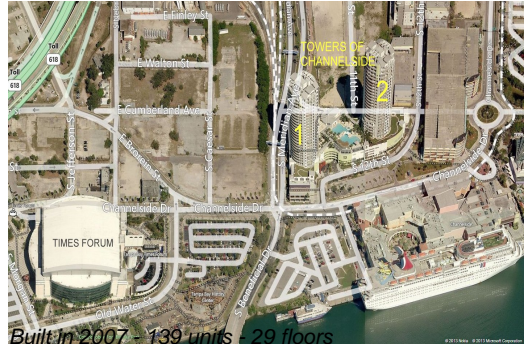
Market Information



Towers of Channelside 2:	\$720/sq. ft.	Tampa:	\$312/sq. ft.
Tampa:	\$312/sq. ft.	Hillsborough:	\$251/sq. ft.

Inventory for Sale

Towers of Channelside 2: 3%
 Tampa: 2%
 Hillsborough: 2%



Avg. Time to Close Over Last 12 Months

Towers of Channelside 2	83 days
Tampa	42 days
Hillsborough	44 days