

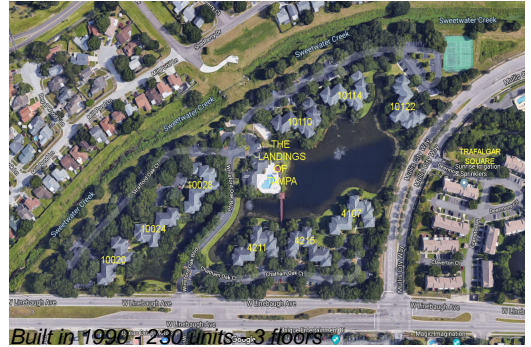
Unit 4107 Chatham Oak Ct # 322 - Landings of Tampa (The)

4107 Chatham Oak Ct # 322 - 10020 Strafford Oak Ct, Tampa, FL, Hillsborough 33624

Unit Information

MLS Number:	U8231437
Status:	ACTIVE
Size:	593 Sq ft.
Bedrooms:	1
Full Bathrooms:	1
Half Bathrooms:	0
Parking Spaces:	
View:	
List Price:	\$155,000
List PPSF:	\$261
Valuated Price:	\$121,000
Valuated PPSF:	\$204

The above valuated price is a baseline figure that does not take into account any specific renovation, upgrade, split, merge, or deterioration of the unit.



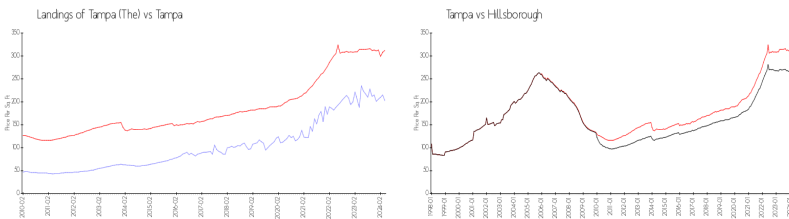
Building Information

Number of units:	230
Number of active listings for rent:	0
Number of active listings for sale:	11
Building inventory for sale:	4%
Number of sales over the last 12 months:	11
Number of sales over the last 6 months:	4
Number of sales over the last 3 months:	3

Recent Sales

Unit #	Size	Closing Date	Sale Price	PPSF
201	990 sq ft	May 2024	\$200,000	\$202
526	990 sq ft	Mar 2024	\$205,000	\$207
902	738 sq ft	Mar 2024	\$165,000	\$224
621	838 sq ft	Dec 2023	\$170,000	\$203
422	990 sq ft	Nov 2023	\$215,000	\$217

Market Information



Landings of Tampa (The):	\$202/sq. ft.	Tampa:	\$312/sq. ft.
Tampa:	\$312/sq. ft.	Hillsborough:	\$251/sq. ft.

Inventory for Sale

Landings of Tampa (The)	5%
Tampa	2%
Hillsborough	2%

Avg. Time to Close Over Last 12 Months

Landings of Tampa (The)	23 days
Tampa	43 days
Hillsborough	44 days