

Unit 1202-T1 - Towers of Channelside 1

1202-T1 - 1211 E Cumberland Ave, Tampa, FL, Hillsborough 33602

Unit Information

MLS Number:	U8231574
Status:	ACTIVE
Size:	1,346 Sq ft.
Bedrooms:	2
Full Bathrooms:	2
Half Bathrooms:	1
Parking Spaces:	Assigned, Covered, Guest, Reserved
View:	City, Water
List Price:	\$859,000
List PPSF:	\$638
Valuated Price:	\$737,000
Valuated PPSF:	\$633

The above valuated price is a baseline figure that does not take into account any specific renovation, upgrade, split, merge, or deterioration of the unit.

Building Information

Number of units:	118
Number of active listings for rent:	0
Number of active listings for sale:	8
Building inventory for sale:	6%
Number of sales over the last 12 months:	2
Number of sales over the last 6 months:	1
Number of sales over the last 3 months:	0

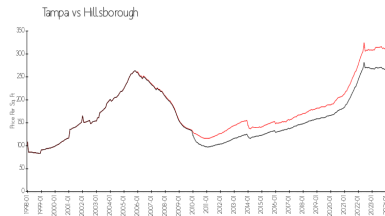
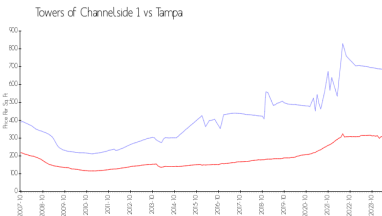
Building Association Information

Towers of Channelside
 1103 E Cumberland Ave
 Tampa, FL 33602
 (813) 229-6500

Recent Sales

Unit #	Size	Closing Date	Sale Price	PPSF
2102	1,967 sq ft	Dec 2023	\$1,098,000	\$558
802	1,346 sq ft	Jun 2023	\$825,000	\$613

Market Information

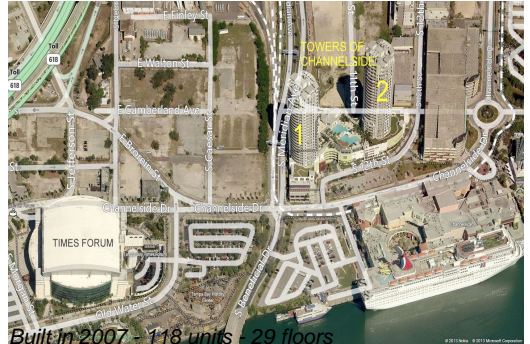


Towers of Channelside 1:	\$684/sq. ft.	Tampa:	\$312/sq. ft.
Tampa:	\$312/sq. ft.	Hillsborough:	\$251/sq. ft.

Inventory for Sale

Towers of Channelside 1	7%
Tampa	2%
Hillsborough	2%

Avg. Time to Close Over Last 12 Months



Towers of Channelside 1
Tampa
Hillsborough

87 days
43 days
44 days