

# Unit 2010 E Palm Ave # 14304 - Quarter at Ybor (3)

2010 E Palm Ave # 14304 - 1810 E Palm Ave, Tampa, FL, Hillsborough 33605

## Unit Information

MLS Number: U8235054  
 Status: ACTIVE  
 Size: 1,044 Sq ft.  
 Bedrooms: 1  
 Full Bathrooms: 1  
 Half Bathrooms: 0  
 Parking Spaces: Assigned, Deeded, Ground Level, Off Street  
 View:  
 List Price: \$249,900  
 List PPSF: \$239  
 Valuated Price: \$278,000  
 Valuated PPSF: \$266

*The above valuated price is a baseline figure that does not take into account any specific renovation, upgrade, split, merge, or deterioration of the unit.*

## Building Information

Number of units: 454  
 Number of active listings for rent: 0  
 Number of active listings for sale: 31  
 Building inventory for sale: 6%  
 Number of sales over the last 12 months: 31  
 Number of sales over the last 6 months: 2  
 Number of sales over the last 3 months: 0

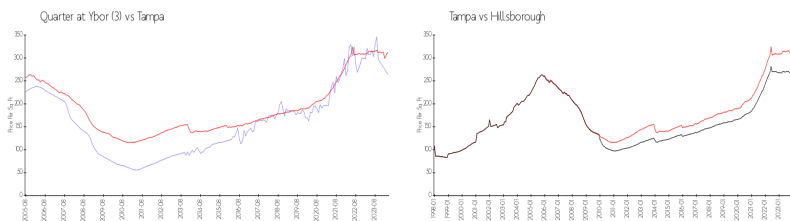
## Building Association Information

THE QUARTER AT YBOR CONDOMINIUM ASSOCIATION, INC  
 5125 Palm Springs Blvd #4104  
 Tampa, FL, 33647 United States  
 (813) 241-8383

## Recent Sales

Unit #	Size	Closing Date	Sale Price	PPSF
11104	867 sq ft	Jan 2024	\$217,500	\$251
1316	598 sq ft	Nov 2023	\$235,000	\$393
11309	672 sq ft	Nov 2023	\$213,000	\$317
5311	672 sq ft	Nov 2023	\$196,000	\$292
4107	867 sq ft	Nov 2023	\$262,500	\$303

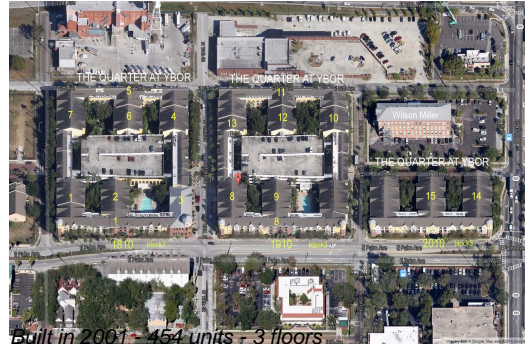
## Market Information



Quarter at Ybor (3): \$264/sq. ft.  
 Tampa: \$312/sq. ft.  
 Tampa: \$312/sq. ft.  
 Hillsborough: \$251/sq. ft.

## Inventory for Sale

Quarter at Ybor (3) 7%  
 Tampa 2%



Hillsborough

2%

**Avg. Time to Close Over Last 12 Months**

Quarter at Ybor (3)

26 days

Tampa

42 days

Hillsborough

44 days