

Unit 2874 Somerset Park Dr # 203 - Somerset Park

2874 Somerset Park Dr # 203 - 2804-2886 Somerset Park Dr, Tampa, FL, Hillsborough 33613

Unit Information

MLS Number:	U8241277
Status:	ACTIVE
Size:	742 Sq ft.
Bedrooms:	1
Full Bathrooms:	1
Half Bathrooms:	0
Parking Spaces:	
View:	
List Price:	\$138,000
List PPSF:	\$186
Valuated Price:	\$121,000
Valuated PPSF:	\$163

The above valuated price is a baseline figure that does not take into account any specific renovation, upgrade, split, merge, or deterioration of the unit.

Building Information

Number of units:	220
Number of active listings for rent:	0
Number of active listings for sale:	3
Building inventory for sale:	1%
Number of sales over the last 12 months:	7
Number of sales over the last 6 months:	3
Number of sales over the last 3 months:	1

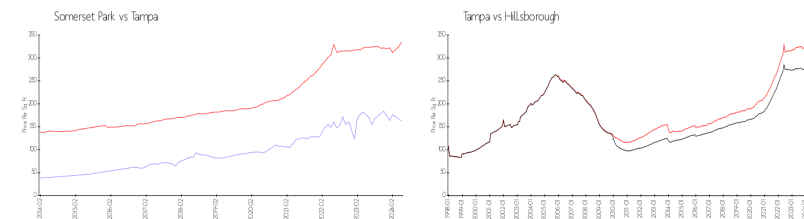
Building Association Information

Somerset Park Condominium Association
2802 Somerset Park Dr,
Tampa, FL 33613
(813) 971-5443

Recent Sales

Unit #	Size	Closing Date	Sale Price	PPSF
101	742 sq ft	Apr 2024	\$134,000	\$181
101	742 sq ft	Feb 2024	\$130,000	\$175
103	1,240 sq ft	Jan 2024	\$202,000	\$163
103	742 sq ft	Nov 2023	\$136,000	\$183
202	742 sq ft	Sep 2023	\$130,000	\$175

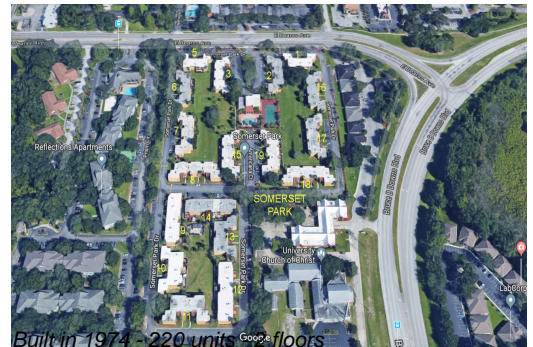
Market Information



Somerset Park:	\$162/sq. ft.	Tampa:	\$334/sq. ft.
Tampa:	\$334/sq. ft.	Hillsborough:	\$261/sq. ft.

Inventory for Sale

Somerset Park	1%
Tampa	2%



Hillsborough	2%
--------------	----

Avg. Time to Close Over Last 12 Months

Somerset Park	18 days
Tampa	45 days
Hillsborough	46 days