

Unit 1923 SW Palm City Rd # I - King Mountain

1923 SW Palm City Rd # I - 1901-1999 SW Palm City Rd, Stuart, FL, Martin 34994

Unit Information

MLS Number:	RX-10948414
Status:	Active
Size:	819 Sq ft.
Bedrooms:	1
Full Bathrooms:	1
Half Bathrooms:	1
Parking Spaces:	Assigned,Guest,Vehicle Restrictions
View:	Garden,Golf
List Price:	\$178,500
List PPSF:	\$218
Valuated Price:	\$138,000
Valuated PPSF:	\$168

The above valuated price is a baseline figure that does not take into account any specific renovation, upgrade, split, merge, or deterioration of the unit.

Building Information

Number of units:	510
Number of active listings for rent:	0
Number of active listings for sale:	17
Building inventory for sale:	3%
Number of sales over the last 12 months:	12
Number of sales over the last 6 months:	6
Number of sales over the last 3 months:	4

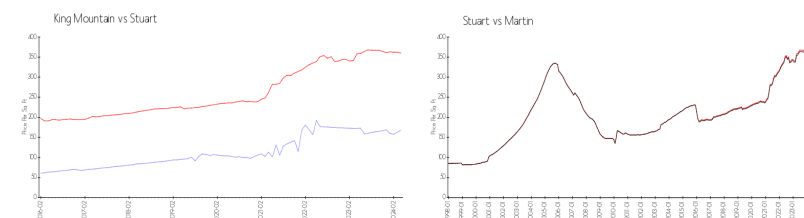
Building Association Information

King Mountain Condominium Association
1991 SW Palm City Rd,
Stuart, FL 34994
(772) 283-8963

Recent Sales

Unit #	Size	Closing Date	Sale Price	PPSF
J	894 sq ft	May 2024	\$130,000	\$145
7h	699 sq ft	May 2024	\$90,000	\$129
45-E	894 sq ft	Apr 2024	\$149,000	\$167
C	699 sq ft	Feb 2024	\$110,000	\$157
A	894 sq ft	Jan 2024	\$170,000	\$190

Market Information

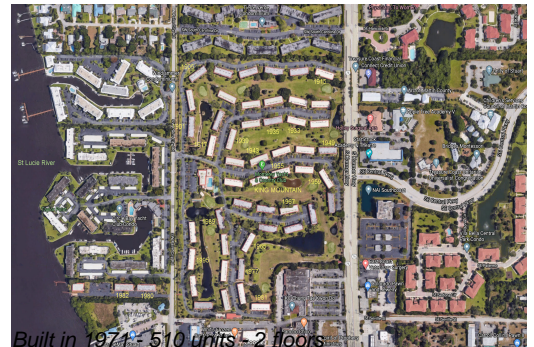


King Mountain: \$168/sq. ft.
Stuart: \$360/sq. ft.

Stuart: \$360/sq. ft.
Martin: \$311/sq. ft.

Inventory for Sale

King Mountain	3%
Stuart	2%
Martin	2%



Avg. Time to Close Over Last 12 Months

King Mountain	101 days
Stuart	50 days
Martin	49 days