

Unit 1947 SW Palm City Rd # G - King Mountain

1947 SW Palm City Rd # G - 1901-1999 SW Palm City Rd, Stuart, FL, Martin 34994

Unit Information

MLS Number: RX-11096296
 Status: Active
 Size: 819 Sq ft.
 Bedrooms: 2
 Full Bathrooms: 1
 Half Bathrooms: 0
 Parking Spaces: Assigned
 View: Golf
 List Price: \$69,900
 List PPSF: \$85
 Valuated Price: \$93,000
 Valuated PPSF: \$114

The above valuated price is a baseline figure that does not take into account any specific renovation, upgrade, split, merge, or deterioration of the unit.

Building Information

Number of units: 510
 Number of active listings for rent: 0
 Number of active listings for sale: 4
 Building inventory for sale: 0%
 Number of sales over the last 12 months: 15
 Number of sales over the last 6 months: 9
 Number of sales over the last 3 months: 5

Building Association Information

King Mountain Condominium Association
 1991 SW Palm City Rd,
 Stuart, FL 34994
 (772) 283-8963

<https://>

Recent Sales

Unit #	Size	Closing Date	Sale Price	PPSF
27-I	819 sq ft	Dec 2025	\$65,000	\$79
G	819 sq ft	Dec 2025	\$75,000	\$92
B	819 sq ft	Nov 2025	\$92,000	\$112
33i	819 sq ft	Oct 2025	\$60,000	\$73
C	700 sq ft	Sep 2025	\$85,000	\$121
A	878 sq ft	Sep 2025	\$102,000	\$116

Market Information

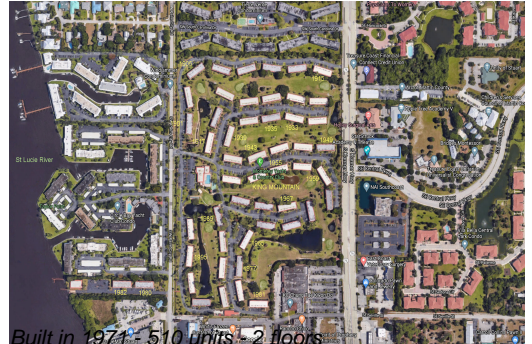


King Mountain: \$113/sq. ft.
 Stuart: \$360/sq. ft.

Stuart: \$360/sq. ft.
 Martin: \$279/sq. ft.

Inventory for Sale

King Mountain 1%
 Stuart 2%



Martin	2%
--------	----

Avg. Time to Close Over Last 12 Months

King Mountain	107 days
Stuart	91 days
Martin	90 days