

Unit 2499 SE 14th St - Palm Breeze at Keys Gate

2499 SE 14th St - 1460-1495 SE 25 Ter, Homestead, FL, Miami-Dade 33035

Unit Information

MLS Number:	A11485600
Status:	Active
Size:	1,965 Sq ft.
Bedrooms:	4
Full Bathrooms:	3
Half Bathrooms:	
Parking Spaces:	1 Space,2 Or More Spaces
View:	
List Price:	\$450,000
List PPSF:	\$229
Valuated Price:	\$432,000
Valuated PPSF:	\$220

The above valuated price is a baseline figure that does not take into account any specific renovation, upgrade, split, merge, or deterioration of the unit.

Building Information

Number of units:	403
Number of active listings for rent:	0
Number of active listings for sale:	10
Building inventory for sale:	2%
Number of sales over the last 12 months:	13
Number of sales over the last 6 months:	9
Number of sales over the last 3 months:	4

Building Association Information

Palm Breeze at Keys Gate
Address: 1427 SE 24th Rd,
Homestead, FL 33035,
Phone: +1 786-349-1000

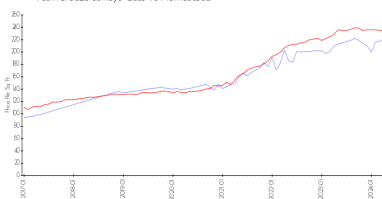
<https://keysgatehometown.com/>

Recent Sales

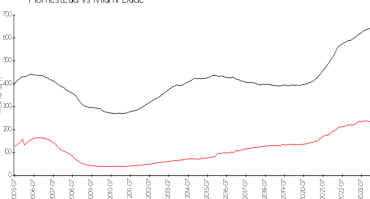
Unit #	Size	Closing Date	Sale Price	PPSF
	1,704 sq ft	May 2024	\$378,000	\$222
	1,852 sq ft	May 2024	\$399,000	\$215
	1,852 sq ft	May 2024	\$390,000	\$211
1421	1,732 sq ft	Apr 2024	\$3,510,000	\$2,027
1393	1,856 sq ft	Feb 2024	\$400,000	\$216

Market Information

Palm Breeze at Keys Gate vs Homestead



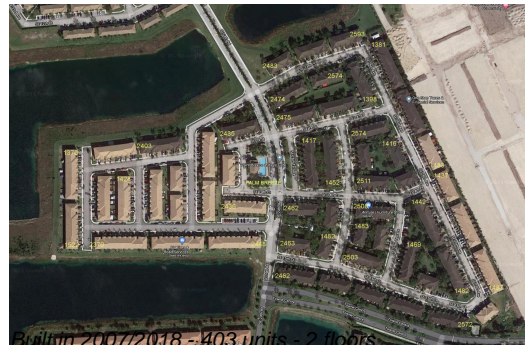
Homestead vs Miami-Dade



Palm Breeze at Keys Gate: \$220/sq. ft.
Homestead: \$235/sq. ft.

Homestead: \$235/sq. ft.
Miami-Dade: \$694/sq. ft.

Inventory for Sale



Palm Breeze at Keys Gate	2%
Homestead	2%
Miami-Dade	3%

Avg. Time to Close Over Last 12 Months

Palm Breeze at Keys Gate	52 days
Homestead	44 days
Miami-Dade	81 days