

Unit 1910 - Isola Brickell Key

1910 - 770 Claughton Island Dr, Miami, FL, Miami-Dade 33131

Unit Information

MLS Number:	A11493958
Status:	Pending
Size:	735 Sq ft.
Bedrooms:	1
Full Bathrooms:	1
Half Bathrooms:	
Parking Spaces:	1 Space,Assigned Parking,Covered Parking
View:	
List Price:	\$420,000
List PPSF:	\$571
Valuated Price:	\$452,000
Valuated PPSF:	\$615

The above valuated price is a baseline figure that does not take into account any specific renovation, upgrade, split, merge, or deterioration of the unit.

Building Information

Number of units:	300
Number of active listings for rent:	23
Number of active listings for sale:	10
Building inventory for sale:	3%
Number of sales over the last 12 months:	15
Number of sales over the last 6 months:	8
Number of sales over the last 3 months:	2

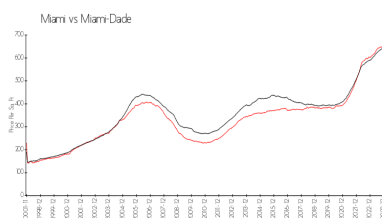
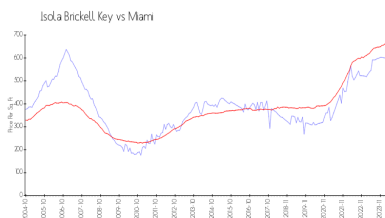
Building Association Information

Isola Brickell Key Condo association
305-371-7007

Recent Sales

Unit #	Size	Closing Date	Sale Price	PPSF
1403	968 sq ft	Apr 2024	\$600,000	\$620
1115	1,065 sq ft	Apr 2024	\$660,000	\$620
405	708 sq ft	Feb 2024	\$360,000	\$508
2110	735 sq ft	Jan 2024	\$425,000	\$578
616	1,065 sq ft	Dec 2023	\$655,000	\$615
1003	968 sq ft	Dec 2023	\$559,500	\$578

Market Information

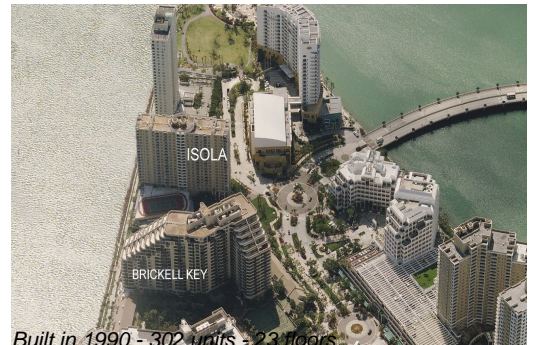


Isola Brickell Key: \$600/sq. ft.
Miami: \$669/sq. ft.

Miami: \$669/sq. ft.
Miami-Dade: \$698/sq. ft.

Inventory for Sale

Isola Brickell Key	3%
Miami	4%
Miami-Dade	3%



Built in 1990 - 302 units - 23 floors

Avg. Time to Close Over Last 12 Months

Isola Brickell Key	36 days
Miami	84 days
Miami-Dade	81 days