

Unit 1907 - Jade Brickell

1907 - 1331 Brickell Bay Dr, Miami, FL, Miami-Dade 33131

Unit Information

MLS Number:	A11523510
Status:	Active
Size:	2,130 Sq ft.
Bedrooms:	3
Full Bathrooms:	3
Half Bathrooms:	
Parking Spaces:	1 Space,Assigned Parking,Covered Parking,Electric Vehicle Charging Station,Guest Parking,Street Parking,Valet Parking
View:	
List Price:	\$3,000,000
List PPSF:	\$1,408
Valuated Price:	\$2,120,000
Valuated PPSF:	\$995

The above valuated price is a baseline figure that does not take into account any specific renovation, upgrade, split, merge, or deterioration of the unit.

Building Information

Number of units:	338
Number of active listings for rent:	16
Number of active listings for sale:	17
Building inventory for sale:	5%
Number of sales over the last 12 months:	18
Number of sales over the last 6 months:	5
Number of sales over the last 3 months:	4

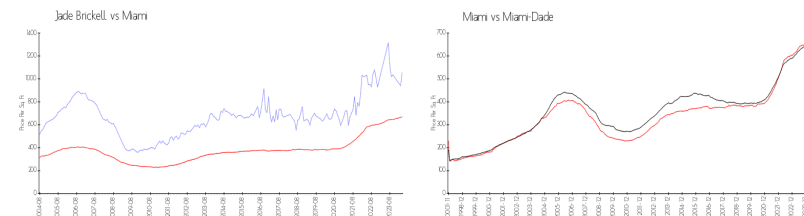
Building Association Information

Jade at Brickell Bay Condominium
(305) 533-1945

Recent Sales

Unit #	Size	Closing Date	Sale Price	PPSF
BL-43	1,640 sq ft	Apr 2024	\$1,600,000	\$976
3511	3,415 sq ft	Apr 2024	\$3,975,000	\$1,164
1008	1,529 sq ft	Mar 2024	\$1,100,000	\$719
1102	1,529 sq ft	Mar 2024	\$1,025,000	\$670
2602	1,529 sq ft	Nov 2023	\$1,250,000	\$818

Market Information



Jade Brickell:	\$1058/sq. ft.	Miami:	\$669/sq. ft.
Miami:	\$669/sq. ft.	Miami-Dade:	\$698/sq. ft.

Inventory for Sale

Jade Brickell	5%
Miami	4%
Miami-Dade	3%



Avg. Time to Close Over Last 12 Months

Jade Brickell	71 days
Miami	84 days
Miami-Dade	81 days