

Unit 2382 SE 15th St - Palm Breeze at Keys Gate

2382 SE 15th St - 1460-1495 SE 25 Ter, Homestead, FL, Miami-Dade 33035

Unit Information

MLS Number: A11530588
 Status: Active
 Size: 1,856 Sq ft.
 Bedrooms: 4
 Full Bathrooms: 2
 Half Bathrooms: 1
 Parking Spaces: 2 Or More Spaces
 View:
 List Price: \$415,000
 List PPSF: \$224
 Valuated Price: \$408,000
 Valuated PPSF: \$220

The above valuated price is a baseline figure that does not take into account any specific renovation, upgrade, split, merge, or deterioration of the unit.

Building Information

Number of units: 403
 Number of active listings for rent: 0
 Number of active listings for sale: 10
 Building inventory for sale: 2%
 Number of sales over the last 12 months: 10
 Number of sales over the last 6 months: 6
 Number of sales over the last 3 months: 1

Building Association Information

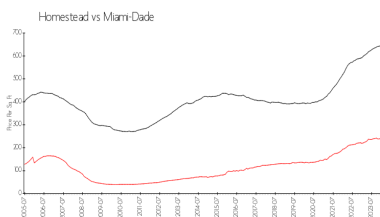
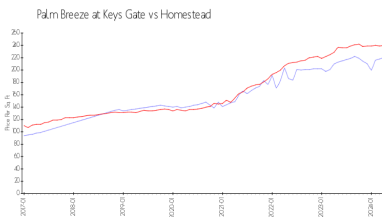
Palm Breeze at Keys Gate
 Address: 1427 SE 24th Rd,
 Homestead, FL 33035,
 Phone: +1 786-349-1000

<https://keysgatehometown.com/>

Recent Sales

Unit #	Size	Closing Date	Sale Price	PPSF
1421	1,732 sq ft	Apr 2024	\$3,510,000	\$2,027
1393	1,856 sq ft	Feb 2024	\$400,000	\$216
	1,856 sq ft	Jan 2024	\$425,000	\$229
2583	1,732 sq ft	Jan 2024	\$372,500	\$215
	1,852 sq ft	Dec 2023	\$388,000	\$210

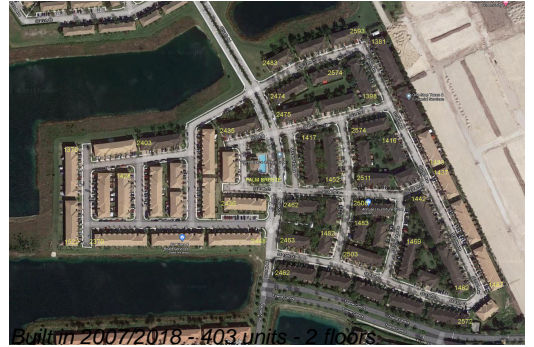
Market Information



Palm Breeze at Keys Gate: \$220/sq. ft.
 Homestead: \$240/sq. ft.

Homestead: \$240/sq. ft.
 Miami-Dade: \$698/sq. ft.

Inventory for Sale



Palm Breeze at Keys Gate	2%
Homestead	2%
Miami-Dade	3%

Avg. Time to Close Over Last 12 Months

Palm Breeze at Keys Gate	53 days
Homestead	45 days
Miami-Dade	81 days