

Unit 22401 SW 88th Pl # 10-27 - Courts at Bayshore 1 (The)

22401 SW 88th Pl # 10-27 - 22-401-22911 SW 88 Pl, Cutler Bay, FL, Miami-Dade 33190

Unit Information

| | |
|-----------------|-----------------------------------|
| MLS Number: | A11538757 |
| Status: | Active |
| Size: | 1,515 Sq ft. |
| Bedrooms: | 3 |
| Full Bathrooms: | 2 |
| Half Bathrooms: | 1 |
| Parking Spaces: | 2 Or More Spaces,Assigned Parking |
| View: | |
| List Price: | \$429,999 |
| List PPSF: | \$284 |
| Valuated Price: | \$372,000 |
| Valuated PPSF: | \$246 |

The above valuated price is a baseline figure that does not take into account any specific renovation, upgrade, split, merge, or deterioration of the unit.

Building Information

| | |
|--|-----|
| Number of units: | 148 |
| Number of active listings for rent: | 0 |
| Number of active listings for sale: | 5 |
| Building inventory for sale: | 3% |
| Number of sales over the last 12 months: | 6 |
| Number of sales over the last 6 months: | 2 |
| Number of sales over the last 3 months: | 1 |

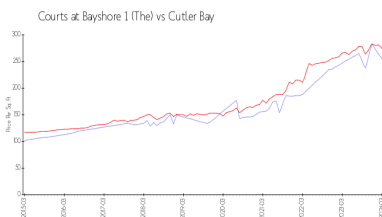
Building Association Information

The Courts at Bayshore
22711 SW 88th Pl,
Cutler Bay, FL 33190
(877) 876-6980

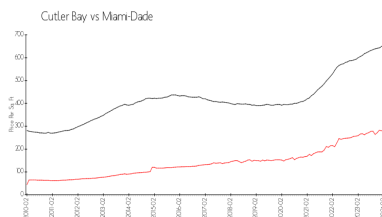
Recent Sales

| Unit # | Size | Closing Date | Sale Price | PPSF |
|--------|-------------|--------------|------------|-------|
| 10-22 | 1,139 sq ft | Feb 2024 | \$230,000 | \$202 |
| 10-21 | 1,139 sq ft | Dec 2023 | \$322,000 | \$283 |
| 3-26 | 1,515 sq ft | Oct 2023 | \$360,000 | \$238 |
| 9-25 | 1,383 sq ft | Aug 2023 | \$349,000 | \$252 |
| 4-23 | 1,139 sq ft | Jul 2023 | \$340,000 | \$299 |
| 11-21 | 1,515 sq ft | Jul 2023 | \$340,000 | \$224 |

Market Information

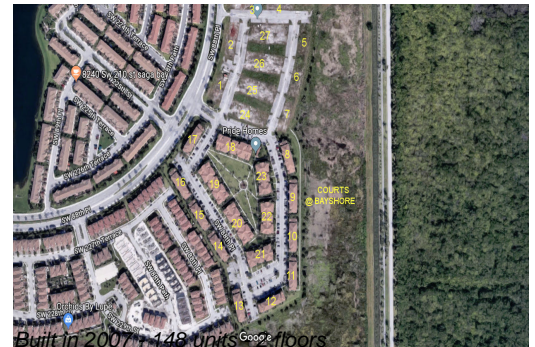


Courts at Bayshore 1 \$245/sq. ft.
(The):
Cutler Bay: \$280/sq. ft.



Cutler Bay: \$280/sq. ft.
Miami-Dade: \$698/sq. ft.

Inventory for Sale



| | |
|----------------------------|----|
| Courts at Bayshore 1 (The) | 3% |
| Cutler Bay | 1% |
| Miami-Dade | 3% |

Avg. Time to Close Over Last 12 Months

| | |
|----------------------------|---------|
| Courts at Bayshore 1 (The) | 57 days |
| Cutler Bay | 36 days |
| Miami-Dade | 81 days |