

# Unit 2524 SE 14th Ct - Palm Breeze at Keys Gate

2524 SE 14th Ct - 1460-1495 SE 25 Ter, Homestead, FL, Miami-Dade 33035

## Unit Information

MLS Number: A11571299  
 Status: Active  
 Size: 1,732 Sq ft.  
 Bedrooms: 3  
 Full Bathrooms: 3  
 Half Bathrooms: 3  
 Parking Spaces: 2 Or More Spaces, Fee Simple Garage, Street Parking  
 View:  
 List Price: \$384,000  
 List PPSF: \$222  
 Valuated Price: \$374,000  
 Valuated PPSF: \$219

*The above valuated price is a baseline figure that does not take into account any specific renovation, upgrade, split, merge, or deterioration of the unit.*

## Building Information

Number of units: 403  
 Number of active listings for rent: 0  
 Number of active listings for sale: 10  
 Building inventory for sale: 2%  
 Number of sales over the last 12 months: 10  
 Number of sales over the last 6 months: 6  
 Number of sales over the last 3 months: 1

## Building Association Information

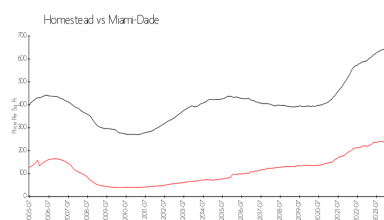
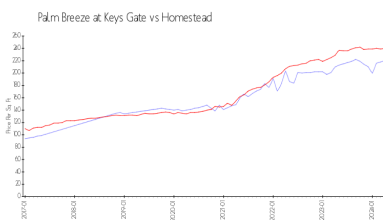
Palm Breeze at Keys Gate  
 Address: 1427 SE 24th Rd,  
 Homestead, FL 33035,  
 Phone: +1 786-349-1000

<https://keysgatehometown.com/>

## Recent Sales

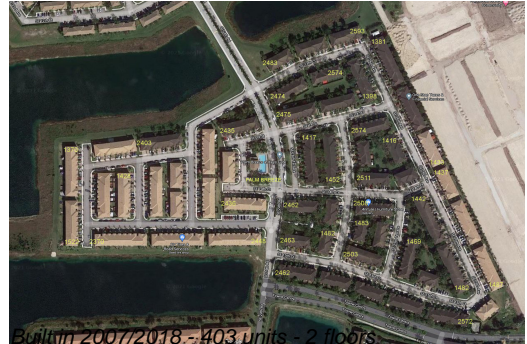
Unit #	Size	Closing Date	Sale Price	PPSF
1421	1,732 sq ft	Apr 2024	\$3,510,000	\$2,027
1393	1,856 sq ft	Feb 2024	\$400,000	\$216
	1,856 sq ft	Jan 2024	\$425,000	\$229
2583	1,732 sq ft	Jan 2024	\$372,500	\$215
	1,852 sq ft	Dec 2023	\$388,000	\$210

## Market Information



Palm Breeze at Keys Gate: \$220/sq. ft.  
 Homestead: \$240/sq. ft.

Homestead: \$240/sq. ft.  
 Miami-Dade: \$698/sq. ft.



### **Inventory for Sale**

Palm Breeze at Keys Gate	2%
Homestead	2%
Miami-Dade	3%

### **Avg. Time to Close Over Last 12 Months**

Palm Breeze at Keys Gate	53 days
Homestead	45 days
Miami-Dade	81 days