

Unit 310-A - Wisperwood Village (A-B&C)

310-A - 9301 SW 92 Ave, Kendall, FL, Miami-Dade 33176

Unit Information

MLS Number:	A11574610
Status:	Active
Size:	670 Sq ft.
Bedrooms:	1
Full Bathrooms:	1
Half Bathrooms:	
Parking Spaces:	2 Spaces,Assigned Parking,Guest Parking
View:	Other View
Rental Price:	\$2,000
List PPSF:	\$3
Valuated Price:	\$267,000
Valuated PPSF:	\$399

The above valuated price is a baseline figure that does not take into account any specific renovation, upgrade, split, merge, or deterioration of the unit.

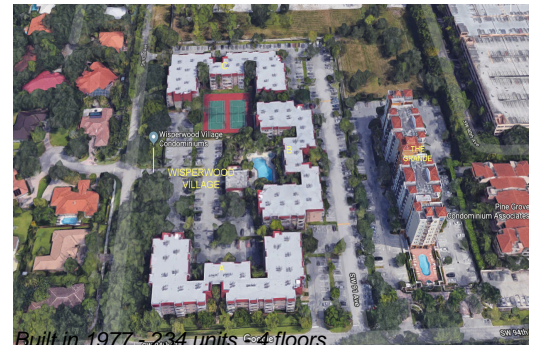
Building Information

Number of units:	234
Number of active listings for rent:	0
Number of active listings for sale:	0
Building inventory for sale:	0%
Number of sales over the last 12 months:	2
Number of sales over the last 6 months:	1
Number of sales over the last 3 months:	1

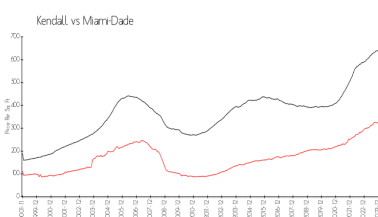
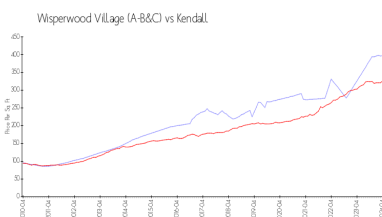
Building Association Information

Wisperwood Village Condominium
9301 SW 92nd Ave
Miami, FL 33176
Office: 305-274-8990
Fax: 305-595-0791
wisperwood@fostercompany.net

<http://www.wisperwoodvillage.com/>



Market Information



Wisperwood Village (A-B&C):	\$397/sq. ft.	Kendall:	\$313/sq. ft.
Kendall:	\$313/sq. ft.	Miami-Dade:	\$705/sq. ft.

Inventory for Sale

Wisperwood Village (A-B&C)	0%
Kendall	1%
Miami-Dade	3%

Avg. Time to Close Over Last 12 Months

Wisperwood Village (A-B&C)	6 days
Kendall	37 days

