

Unit 1405 SE 26th Ave - Palm Breeze at Keys Gate

1405 SE 26th Ave - 1460-1495 SE 25 Ter, Homestead, FL, Miami-Dade 33035

Unit Information

MLS Number: A11635351
 Status: Active
 Size: 1,883 Sq ft.
 Bedrooms: 4
 Full Bathrooms: 3
 Half Bathrooms:
 Parking Spaces: 2 Or More Spaces, Fee Simple Garage
 View:
 List Price: \$394,900
 List PPSF: \$210
 Valuated Price: \$314,000
 Valuated PPSF: \$167

The above valuated price is a baseline figure that does not take into account any specific renovation, upgrade, split, merge, or deterioration of the unit.

Building Information

Number of units: 403
 Number of active listings for rent: 0
 Number of active listings for sale: 24
 Building inventory for sale: 5%
 Number of sales over the last 12 months: 42
 Number of sales over the last 6 months: 27
 Number of sales over the last 3 months: 6

Building Association Information

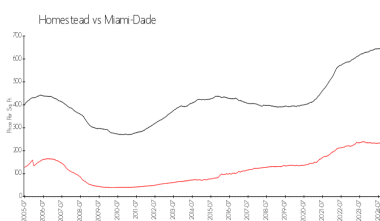
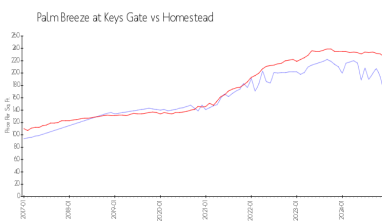
Palm Breeze at Keys Gate
 Address: 1427 SE 24th Rd,
 Homestead, FL 33035,
 Phone: +1 786-349-1000

<https://keysgatehometown.com/>

Recent Sales

| Unit # | Size | Closing Date | Sale Price | PPSF |
|--------|-------------|--------------|------------|-------|
| | 1,704 sq ft | Jan 2025 | \$357,500 | \$210 |
| | 1,704 sq ft | Jan 2025 | \$350,000 | \$205 |
| | 1,965 sq ft | Dec 2024 | \$400,000 | \$204 |
| | 1,916 sq ft | Dec 2024 | \$399,900 | \$209 |
| | 1,704 sq ft | Dec 2024 | \$362,500 | \$213 |

Market Information

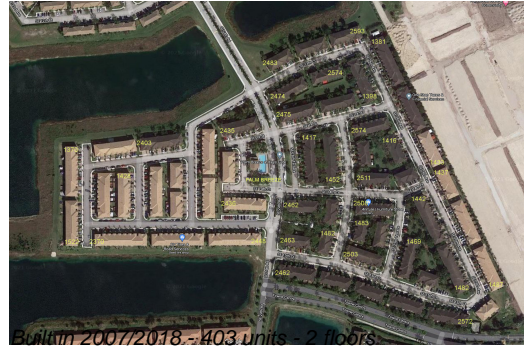


Palm Breeze at Keys Gate: \$167/sq. ft.
 Homestead: \$227/sq. ft.

Homestead: \$227/sq. ft.
 Miami-Dade: \$688/sq. ft.

Inventory for Sale

Palm Breeze at Keys Gate: 6%
 Homestead: 4%



Miami-Dade

5%

Avg. Time to Close Over Last 12 Months

Palm Breeze at Keys Gate

35 days

Homestead

56 days

Miami-Dade

90 days