

Unit 8151 NW 104th Ave # 31 - Apex at Park Central

8151 NW 104th Ave # 31 - 8195 NW 104 Ave, Doral, FL, Miami-Dade

Unit Information

MLS Number: A11673085
 Status: Active
 Size: 1,236 Sq ft.
 Bedrooms: 3
 Full Bathrooms: 2
 Half Bathrooms:
 Parking Spaces: 1 Space,Assigned Parking
 View:
 List Price: \$497,000
 List PPSF: \$402
 Valuated Price: \$532,000
 Valuated PPSF: \$430

The above valuated price is a baseline figure that does not take into account any specific renovation, upgrade, split, merge, or deterioration of the unit.

Building Information

Number of units: 384
 Number of active listings for rent: 0
 Number of active listings for sale: 12
 Building inventory for sale: 3%
 Number of sales over the last 12 months: 19
 Number of sales over the last 6 months: 8
 Number of sales over the last 3 months: 4

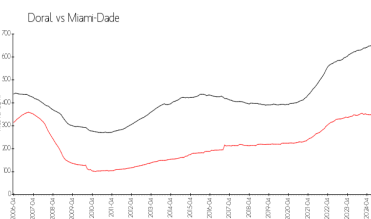
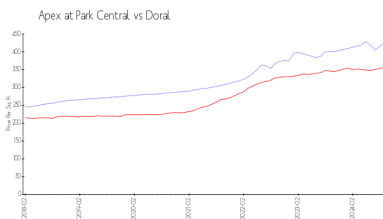
Building Association Information

Apex at Park Central
 Address: 8195 NW 104th Ave,
 Doral, FL 33178
 Phone: +1 855-777-3414

Recent Sales

Unit #	Size	Closing Date	Sale Price	PPSF
24	1,135 sq ft	Nov 2024	\$450,000	\$396
2	1,072 sq ft	Sep 2024	\$460,000	\$429
24	963 sq ft	Sep 2024	\$405,000	\$421
4	1,236 sq ft	Sep 2024	\$520,000	\$421
01	1,236 sq ft	Jul 2024	\$497,000	\$402

Market Information

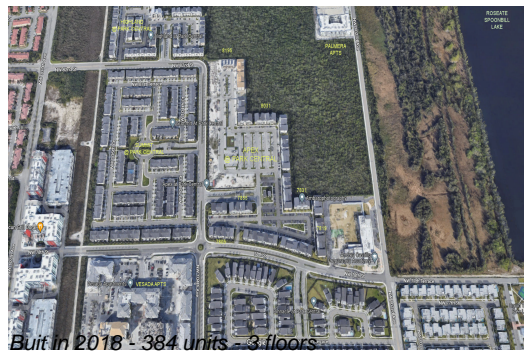


Apex at Park Central: \$426/sq. ft.
 Doral: \$356/sq. ft.
 Doral: \$356/sq. ft.
 Miami-Dade: \$694/sq. ft.

Inventory for Sale

Apex at Park Central 3%
 Doral 3%
 Miami-Dade 4%

Avg. Time to Close Over Last 12 Months



Apex at Park Central
Doral
Miami-Dade

47 days
60 days
86 days