

Unit 2470 SE 14th Ct - Palm Breeze at Keys Gate

2470 SE 14th Ct - 1460-1495 SE 25 Ter, Homestead, FL, Miami-Dade 33035

Unit Information

MLS Number: A11674471
 Status: Active Under Contract
 Size: 1,704 Sq ft.
 Bedrooms: 3
 Full Bathrooms: 3
 Half Bathrooms: 3
 Parking Spaces: 2 Or More Spaces
 View:
 List Price: \$357,900
 List PPSF: \$210
 Valuated Price: \$284,000
 Valuated PPSF: \$167

The above valuated price is a baseline figure that does not take into account any specific renovation, upgrade, split, merge, or deterioration of the unit.

Building Information

Number of units: 403
 Number of active listings for rent: 0
 Number of active listings for sale: 19
 Building inventory for sale: 4%
 Number of sales over the last 12 months: 43
 Number of sales over the last 6 months: 24
 Number of sales over the last 3 months: 7

Building Association Information

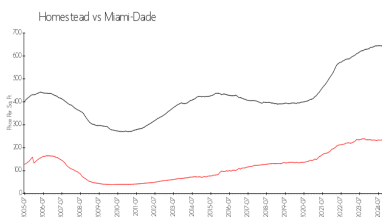
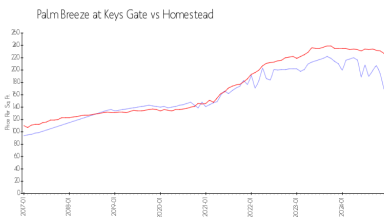
Palm Breeze at Keys Gate
 Address: 1427 SE 24th Rd,
 Homestead, FL 33035,
 Phone: +1 786-349-1000

<https://keysgatehometown.com/>

Recent Sales

Unit #	Size	Closing Date	Sale Price	PPSF
	1,704 sq ft	Jan 2025	\$357,500	\$210
	1,704 sq ft	Jan 2025	\$350,000	\$205
	1,852 sq ft	Jan 2025	\$375,000	\$202
	1,965 sq ft	Dec 2024	\$400,000	\$204
	1,916 sq ft	Dec 2024	\$399,900	\$209
	1,704 sq ft	Dec 2024	\$362,500	\$213

Market Information

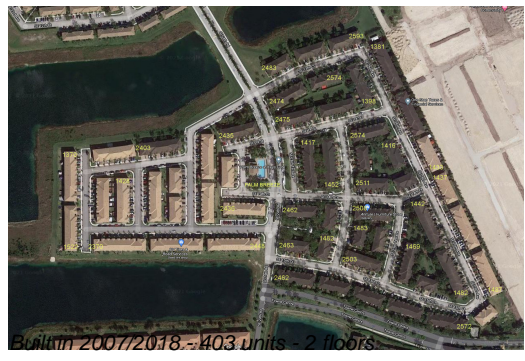


Palm Breeze at Keys Gate: \$167/sq. ft.
 Homestead: \$227/sq. ft.

Homestead: \$227/sq. ft.
 Miami-Dade: \$688/sq. ft.

Inventory for Sale

Palm Breeze at Keys Gate: 5%



Homestead	4%
Miami-Dade	5%

Avg. Time to Close Over Last 12 Months

Palm Breeze at Keys Gate	36 days
Homestead	56 days
Miami-Dade	90 days