

Unit 22711 SW 88th Pl # 7-23 - Courts at Bayshore 1 (The)

22711 SW 88th Pl # 7-23 - 22-401-22911 SW 88 Pl, Cutler Bay, FL, Miami-Dade 33190

Unit Information

MLS Number: A11888731
 Status: Active
 Size: 1,383 Sq ft.
 Bedrooms: 3
 Full Bathrooms: 2
 Half Bathrooms: 1
 Parking Spaces: 2 Or More Spaces,Guest Parking
 View:
 List Price: \$360,000
 List PPSF: \$260
 Valuated Price: \$324,000
 Valuated PPSF: \$234

The above valuated price is a baseline figure that does not take into account any specific renovation, upgrade, split, merge, or deterioration of the unit.

Building Information

Number of units: 148
 Number of active listings for rent: 0
 Number of active listings for sale: 6
 Building inventory for sale: 4%
 Number of sales over the last 12 months: 4
 Number of sales over the last 6 months: 3
 Number of sales over the last 3 months: 0

Building Association Information

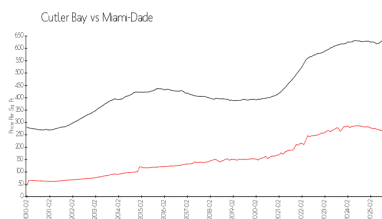
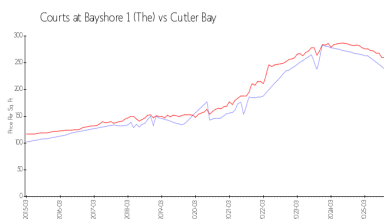
The Courts at Bayshore
 22711 SW 88th Pl,
 Cutler Bay, FL 33190
 (877) 876-6980

<https://>

Recent Sales

Unit #	Size	Closing Date	Sale Price	PPSF
4-21	1,139 sq ft	Aug 2025	\$305,000	\$268
16-26	1,383 sq ft	Jul 2025	\$320,000	\$231
11-27	1,515 sq ft	Jul 2025	\$360,000	\$238
4-18	1,139 sq ft	Apr 2025	\$300,000	\$263

Market Information

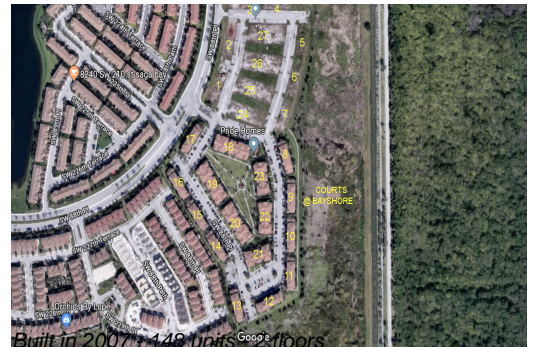


Courts at Bayshore 1 \$234/sq. ft.
 (The):
 Cutler Bay: \$258/sq. ft.

Cutler Bay: \$258/sq. ft.
 Miami-Dade: \$668/sq. ft.

Inventory for Sale

Courts at Bayshore 1 (The) 4%
 Cutler Bay 3%



Miami-Dade	4%
------------	----

Avg. Time to Close Over Last 12 Months

Courts at Bayshore 1 (The)	59 days
Cutler Bay	56 days
Miami-Dade	77 days