

Unit 1455 SE 26th Ave - Palm Breeze at Keys Gate

1455 SE 26th Ave - 1460-1495 SE 25 Ter, Homestead, FL, Miami-Dade 33035

Unit Information

MLS Number:	F10464598
Status:	Active
Size:	1,916 Sq ft.
Bedrooms:	4
Full Bathrooms:	3
Half Bathrooms:	0
Parking Spaces:	2 Or More Spaces
View:	Garden View
List Price:	\$399,900
List PPSF:	\$209
Valuated Price:	\$328,000
Valuated PPSF:	\$171

The above valuated price is a baseline figure that does not take into account any specific renovation, upgrade, split, merge, or deterioration of the unit.

Building Information

Number of units:	403
Number of active listings for rent:	0
Number of active listings for sale:	23
Building inventory for sale:	5%
Number of sales over the last 12 months:	40
Number of sales over the last 6 months:	29
Number of sales over the last 3 months:	15

Building Association Information

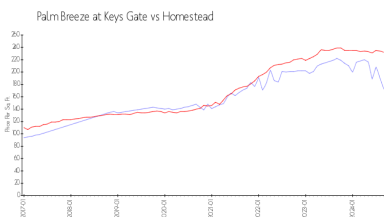
Palm Breeze at Keys Gate
 Address: 1427 SE 24th Rd,
 Homestead, FL 33035,
 Phone: +1 786-349-1000

<https://keysgatehometown.com/>

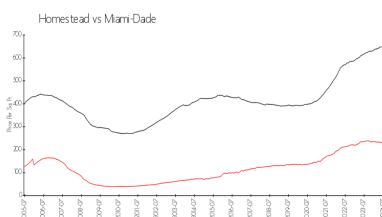
Recent Sales

Unit #	Size	Closing Date	Sale Price	PPSF
	1,965 sq ft	Oct 2024	\$384,900	\$196
2405	1,732 sq ft	Oct 2024	\$384,999	\$222
	1,965 sq ft	Oct 2024	\$400,000	\$204
	1,883 sq ft	Sep 2024	\$377,000	\$200
	1,965 sq ft	Sep 2024	\$390,000	\$198
	1,704 sq ft	Sep 2024	\$366,000	\$215
	1,965 sq ft	Sep 2024	\$384,000	\$195
	1,732 sq ft	Sep 2024	\$370,000	\$214
1421	1,952 sq ft	Sep 2024	\$441,000	\$226
1381	1,952 sq ft	Sep 2024	\$410,000	\$210
	1,856 sq ft	Sep 2024	\$410,000	\$221

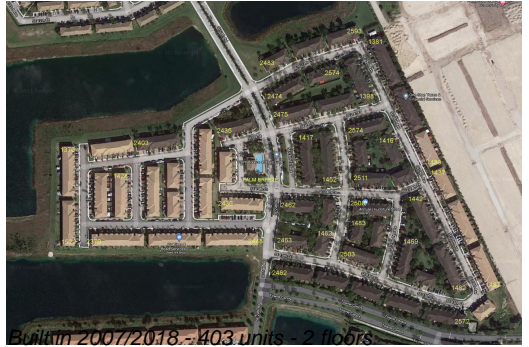
Market Information



Palm Breeze at Keys Gate: \$172/sq. ft.



Homestead: \$232/sq. ft.



Homestead: \$232/sq. ft. Miami-Dade: \$694/sq. ft.

Inventory for Sale

Palm Breeze at Keys Gate	6%
Homestead	4%
Miami-Dade	4%

Avg. Time to Close Over Last 12 Months

Palm Breeze at Keys Gate	36 days
Homestead	50 days
Miami-Dade	86 days