

# Unit 260 Suffolk G - Suffolk at Century Village (A to G)

260 Suffolk G - 1-294 Suffolk, Boca Raton, FL, Palm Beach 33434

## Unit Information

MLS Number:	A11462383
Status:	Active
Size:	600 Sq ft.
Bedrooms:	1
Full Bathrooms:	1
Half Bathrooms:	
Parking Spaces:	1 Space,Assigned Parking,Guest Parking
View:	
List Price:	\$120,000
List PPSF:	\$200
Valuated Price:	\$87,000
Valuated PPSF:	\$145

The above valuated price is a baseline figure that does not take into account any specific renovation, upgrade, split, merge, or deterioration of the unit.

## Building Information

Number of units:	294
Number of active listings for rent:	0
Number of active listings for sale:	21
Building inventory for sale:	7%
Number of sales over the last 12 months:	22
Number of sales over the last 6 months:	8
Number of sales over the last 3 months:	2

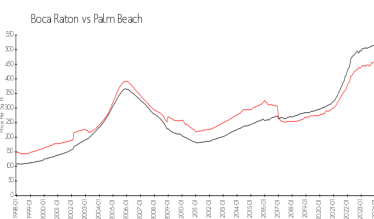
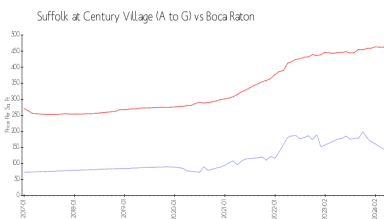
## Building Association Information

Century Village at Boca Raton  
 Address: 19296 Lyons Rd,  
 Boca Raton, FL 33434  
 Phone: +1 561-451-1211

## Recent Sales

Unit #	Size	Closing Date	Sale Price	PPSF
174	715 sq ft	Apr 2024	\$90,000	\$126
275	810 sq ft	Mar 2024	\$96,000	\$119
	675 sq ft	Jan 2024	\$85,500	\$127
	675 sq ft	Jan 2024	\$105,000	\$156
	944 sq ft	Jan 2024	\$145,000	\$154
	810 sq ft	Jan 2024	\$115,000	\$142

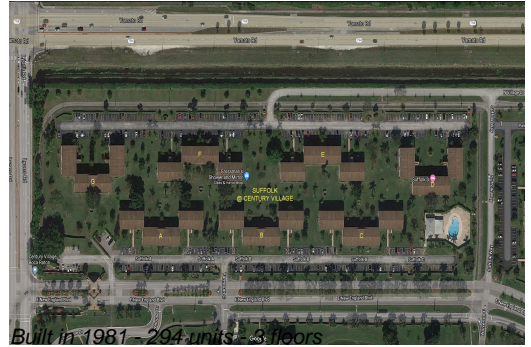
## Market Information



Suffolk at Century Village (A to G):	\$145/sq. ft.	Boca Raton:	\$462/sq. ft.
Boca Raton:	\$462/sq. ft.	Palm Beach:	\$468/sq. ft.

## Inventory for Sale

Suffolk at Century Village (A to G) 7%



Boca Raton	3%
Palm Beach	3%

**Avg. Time to Close Over Last 12 Months**

Suffolk at Century Village (A to G)	65 days
Boca Raton	57 days
Palm Beach	56 days