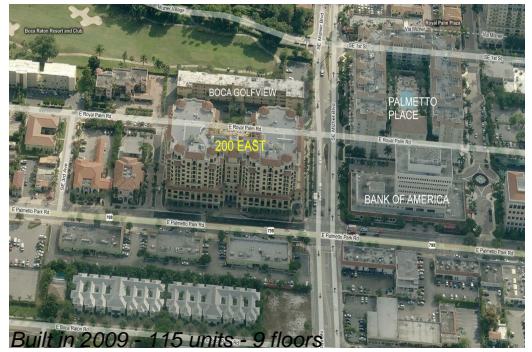


# Unit 700 - 200 East

700 - 200 E Palmetto Park Rd, Boca Raton, FL, Palm Beach 33432

## Unit Information

MLS Number: A11497157  
 Status: Active  
 Size: 3,039 Sq ft.  
 Bedrooms: 3  
 Full Bathrooms: 3  
 Half Bathrooms: 1  
 Parking Spaces: 2 Or More Spaces, Electric Vehicle Charging Station  
 View:  
 List Price: \$2,699,000  
 List PPSF: \$888  
 Valuated Price: \$2,257,000  
 Valuated PPSF: \$743



*The above valuated price is a baseline figure that does not take into account any specific renovation, upgrade, split, merge, or deterioration of the unit.*

## Building Information

Number of units: 115  
 Number of active listings for rent: 1  
 Number of active listings for sale: 5  
 Building inventory for sale: 4%  
 Number of sales over the last 12 months: 11  
 Number of sales over the last 6 months: 8  
 Number of sales over the last 3 months: 7

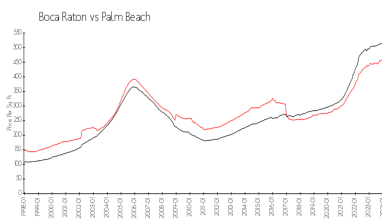
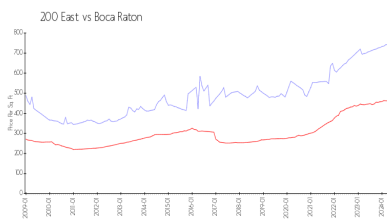
## Building Association Information

200 East Palmetto Park Condominium Association, 200 E Palmetto Park Road  
 Boca Raton, FL33432  
 (561) 368-9045

## Recent Sales

Unit #	Size	Closing Date	Sale Price	PPSF
802	2,168 sq ft	Apr 2024	\$1,599,000	\$738
401	3,518 sq ft	Apr 2024	\$1,525,000	\$433
509	2,156 sq ft	Mar 2024	\$1,825,000	\$846
810	2,018 sq ft	Feb 2024	\$1,500,000	\$743
707	2,549 sq ft	Feb 2024	\$1,700,000	\$667
705	2,490 sq ft	Feb 2024	\$1,665,000	\$669
702	2,168 sq ft	Feb 2024	\$1,600,000	\$738

## Market Information



200 East:	\$744/sq. ft.	Boca Raton:	\$462/sq. ft.
Boca Raton:	\$462/sq. ft.	Palm Beach:	\$468/sq. ft.

## Inventory for Sale

200 East: 4%  
 Boca Raton: 3%  
 Palm Beach: 3%

**Avg. Time to Close Over Last 12 Months**

200 East	53 days
Boca Raton	57 days
Palm Beach	56 days