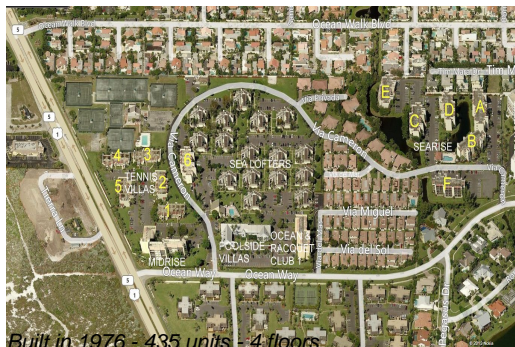


Unit Sea Lofters H-10 - Jupiter Ocean & Racquet Club

Sea Lofters H-10 - 1605 S US Hwy 1, Jupiter, FL, Palm Beach 33477

Unit Information

MLS Number: A11540236
 Status: Active
 Size: 1,160 Sq ft.
 Bedrooms: 2
 Full Bathrooms: 2
 Half Bathrooms:
 Parking Spaces: 1 Space, Additional Spaces Available, Guest Parking
 View: Other View
 Rental Price: \$3,990
 List PPSF: \$3
 Valuated Price: \$434,000
 Valuated PPSF: \$374



The above valuated price is a baseline figure that does not take into account any specific renovation, upgrade, split, merge, or deterioration of the unit.

Building Information

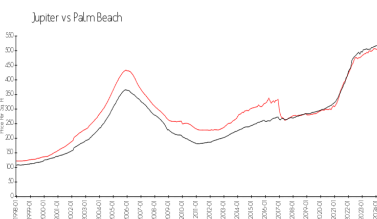
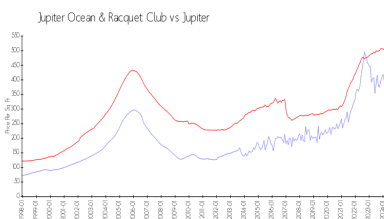
Number of units: 435
 Number of active listings for rent: 0
 Number of active listings for sale: 19
 Building inventory for sale: 4%
 Number of sales over the last 12 months: 23
 Number of sales over the last 6 months: 12
 Number of sales over the last 3 months: 6

Building Association Information

Jupiter Ocean & Racquet Club Association Address: 1605 U.S. 1, Jupiter, FL 33477
 Phone: (561) 747-5331

<http://jorcinc.net/site/>

Market Information



Jupiter Ocean & Racquet Club:	\$335/sq. ft.	Jupiter:	\$492/sq. ft.
Jupiter:	\$492/sq. ft.	Palm Beach:	\$454/sq. ft.

Inventory for Sale

Jupiter Ocean & Racquet Club: 4%
 Jupiter: 3%
 Palm Beach: 3%

Avg. Time to Close Over Last 12 Months

Jupiter Ocean & Racquet Club: 64 days
 Jupiter: 64 days

Palm Beach

56 days