

Unit 221 WATERSIDE DR - Waterside Village

221 WATERSIDE DR - 100-808 Waterside Dr, Hypoluxo, FL, Palm Beach 33462

Unit Information

MLS Number:	A11553756
Status:	Active
Size:	1,259 Sq ft.
Bedrooms:	3
Full Bathrooms:	2
Half Bathrooms:	1
Parking Spaces:	
View:	
Rental Price:	\$2,200
List PPSF:	\$2
Valuated Price:	\$327,000
Valuated PPSF:	\$260

The above valuated price is a baseline figure that does not take into account any specific renovation, upgrade, split, merge, or deterioration of the unit.

Building Information

Number of units:	412
Number of active listings for rent:	3
Number of active listings for sale:	0
Building inventory for sale:	0%
Number of sales over the last 12 months:	5
Number of sales over the last 6 months:	1
Number of sales over the last 3 months:	1

Building Association Information

Waterside Village of Palm Beach

Condominium Association, Inc.
 132 Waterside Drive
 Hypoluxo, FL 33462-6160
 Telephone (561) 582-6765
 Fax (561) 582-5368
 Property Manager & Staff:
 watersidevillage@bellsouth.net

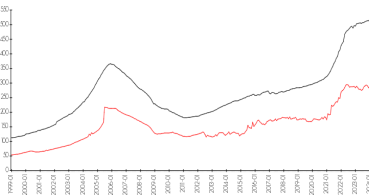
<http://www.watersidevillage.com/>

Market Information

Waterside Village vs Hypoluxo



Hypoluxo vs Palm Beach



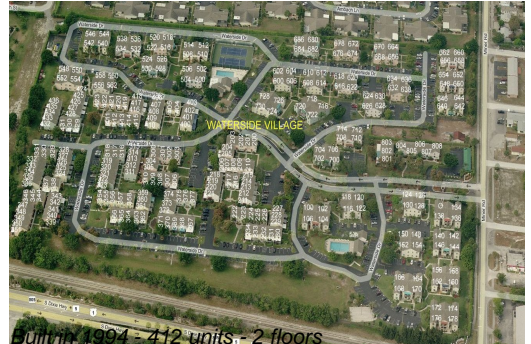
Waterside Village: \$256/sq. ft.
 Hypoluxo: \$281/sq. ft.

Hypoluxo: \$281/sq. ft.
 Palm Beach: \$467/sq. ft.

Inventory for Sale

Waterside Village	0%
Hypoluxo	2%
Palm Beach	3%

Avg. Time to Close Over Last 12 Months



Waterside Village
Hypoluxo
Palm Beach

30 days
65 days
56 days