

# Unit 211 - Ponte Verde at Palm Beach Lakes

211 - 1401 Village Blvd, West Palm Beach, FL, Palm Beach 33409

## Unit Information

MLS Number:	A11591753
Status:	Active
Size:	909 Sq ft.
Bedrooms:	2
Full Bathrooms:	1
Half Bathrooms:	
Parking Spaces:	Assigned Parking
View:	
List Price:	\$219,900
List PPSF:	\$242
Valuated Price:	\$177,000
Valuated PPSF:	\$190

*The above valuated price is a baseline figure that does not take into account any specific renovation, upgrade, split, merge, or deterioration of the unit.*

## Building Information

Number of units:	400
Number of active listings for rent:	0
Number of active listings for sale:	12
Building inventory for sale:	3%
Number of sales over the last 12 months:	7
Number of sales over the last 6 months:	5
Number of sales over the last 3 months:	2

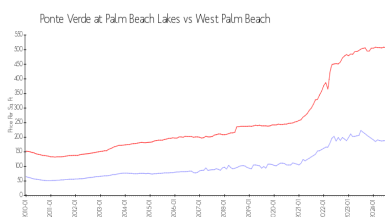
## Building Association Information

Ponte Verde  
1401 Village Blvd  
West Palm Beach, FL 33409  
Phone: 561-471-7198  
Secondary Phone: 561-721-9619  
Secondary Phone: 561-932-0437

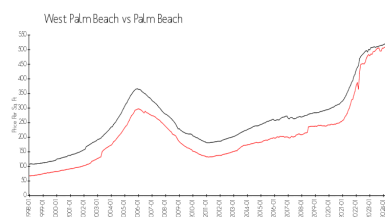
## Recent Sales

Unit #	Size	Closing Date	Sale Price	PPSF
1918	989 sq ft	Jun 2024	\$165,000	\$167
514	931 sq ft	May 2024	\$173,000	\$186
2324	731 sq ft	Apr 2024	\$170,000	\$233
812	1,042 sq ft	Apr 2024	\$211,250	\$203
1334	931 sq ft	Feb 2024	\$175,000	\$188

## Market Information



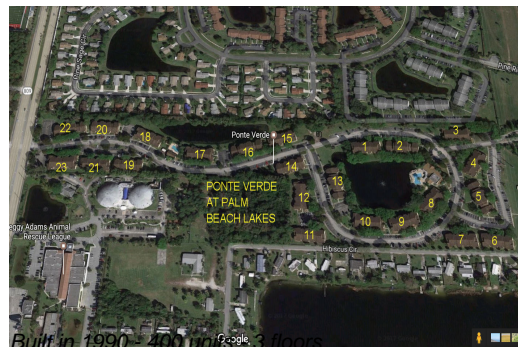
Ponte Verde at Palm \$191/sq. ft.  
Beach Lakes:  
West Palm Beach: \$505/sq. ft.



West Palm Beach: \$505/sq. ft.  
Palm Beach: \$474/sq. ft.

## Inventory for Sale

Ponte Verde at Palm Beach Lakes	3%
West Palm Beach	4%



Palm Beach 3%

**Avg. Time to Close Over Last 12 Months**

Ponte Verde at Palm Beach Lakes	43 days
West Palm Beach	56 days
Palm Beach	59 days