

Unit 1880 N Congress Ave # 105 - Presidential Golfview

1880 N Congress Ave # 105 - 1700 N Congress Ave, West Palm Beach, FL, Palm Beach 33401

Unit Information

MLS Number:	A11622263
Status:	Active
Size:	850 Sq ft.
Bedrooms:	2
Full Bathrooms:	1
Half Bathrooms:	
Parking Spaces:	1 Space, Additional Spaces Available
View:	
List Price:	\$195,000
List PPSF:	\$229
Valuated Price:	\$172,000
Valuated PPSF:	\$202

The above valuated price is a baseline figure that does not take into account any specific renovation, upgrade, split, merge, or deterioration of the unit.

Building Information

Number of units:	436
Number of active listings for rent:	0
Number of active listings for sale:	14
Building inventory for sale:	3%
Number of sales over the last 12 months:	17
Number of sales over the last 6 months:	10
Number of sales over the last 3 months:	4

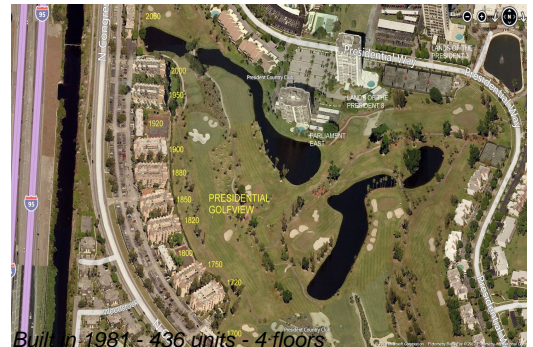
Building Association Information

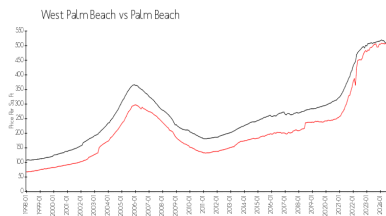
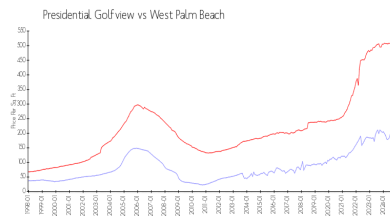
Presidential Golfview Condo
 West Palm Beach, FL 33401
 1700 N Congress Ave Apt A,
 (561) 684-7725
 1720 N Congress Ave Apt A,
 (561) 471-0981
 1750 N Congress Ave,
 (561) 688-0892
 1820 N Congress Ave Apt A,
 (561) 686-6342
 1850 N Congress Ave,
 (561) 686-1077
 1860 N Congress Ave
 (561) 686-4948
 1900 S Congress Ave Ste A,
 (561) 683-7512
 2000 N Congress Ave # A,
 (561) 684-1531

Recent Sales

Unit #	Size	Closing Date	Sale Price	PPSF
403	775 sq ft	Aug 2024	\$162,000	\$209
410	775 sq ft	Jun 2024	\$152,000	\$196
203	1,030 sq ft	Jun 2024	\$193,000	\$187
404	775 sq ft	Jun 2024	\$132,000	\$170
411	1,030 sq ft	May 2024	\$175,000	\$170
107	850 sq ft	May 2024	\$165,000	\$194
301	1,030 sq ft	May 2024	\$179,000	\$174

Market Information





Presidential	\$206/sq. ft.	West Palm Beach:	\$505/sq. ft.
Golfview:		Palm Beach:	\$474/sq. ft.
West Palm Beach:	\$505/sq. ft.		

Inventory for Sale

Presidential Golfview	3%
West Palm Beach	4%
Palm Beach	3%

Avg. Time to Close Over Last 12 Months

Presidential Golfview	37 days
West Palm Beach	56 days
Palm Beach	59 days