

Unit 675 HIGH POINT BLVD N #A - High Point 2

675 HIGH POINT BLVD N #A - 610 High Point Dr, Delray Beach, FL, Palm Beach 33445

Unit Information

MLS Number: A11633244
 Status: Active
 Size: 1,175 Sq ft.
 Bedrooms: 2
 Full Bathrooms: 2
 Half Bathrooms:
 Parking Spaces: 2 Or More Spaces,Assigned Parking
 View:
 List Price: \$175,000
 List PPSF: \$149
 Valuated Price: \$195,000
 Valuated PPSF: \$172

The above valuated price is a baseline figure that does not take into account any specific renovation, upgrade, split, merge, or deterioration of the unit.

Building Information

Number of units: 276
 Number of active listings for rent: 4
 Number of active listings for sale: 5
 Building inventory for sale: 1%
 Number of sales over the last 12 months: 4
 Number of sales over the last 6 months: 3
 Number of sales over the last 3 months: 1

Building Association Information

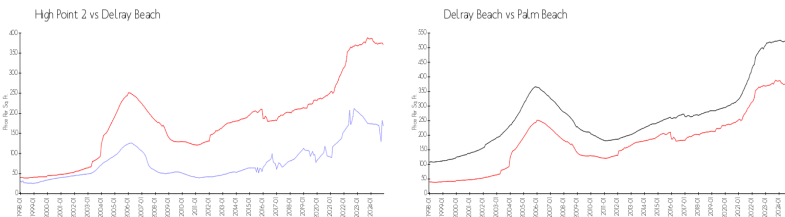
High Point of Delray Beach Condominium Association, Section 2, Inc.
 245 High Point Blvd.
 Delray Beach, Fl. 33445
 561-243-9186
 highpointhoa@ATT.net

<http://www.highpoint2.org/>

Recent Sales

Unit #	Size	Closing Date	Sale Price	PPSF
B	1,122 sq ft	Nov 2024	\$160,000	\$143
D	1,386 sq ft	Oct 2024	\$150,000	\$108
C	1,122 sq ft	Aug 2024	\$157,500	\$140
C	1,122 sq ft	May 2024	\$160,000	\$143

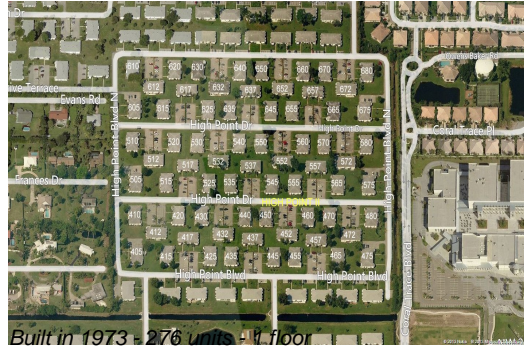
Market Information



High Point 2: \$169/sq. ft.
 Delray Beach: \$371/sq. ft.
 Delray Beach: \$371/sq. ft.
 Palm Beach: \$465/sq. ft.

Inventory for Sale

High Point 2: 2%
 Delray Beach: 3%



Palm Beach 4%

Avg. Time to Close Over Last 12 Months

High Point 2	46 days
Delray Beach	59 days
Palm Beach	62 days