

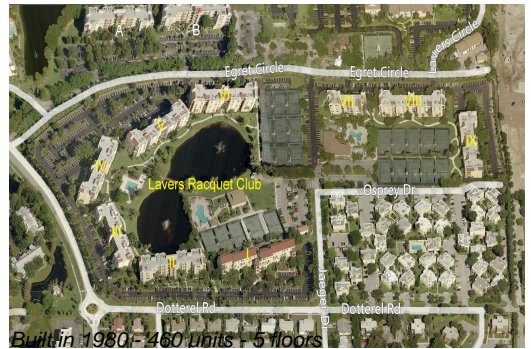
# Unit 1209 - Lavers Delray Racquet Club I to IX

1209 - 950 Egret Cir, Delray Beach, FL, Palm Beach 33444

## Unit Information

MLS Number:	A11647005
Status:	Pending
Size:	758 Sq ft.
Bedrooms:	1
Full Bathrooms:	1
Half Bathrooms:	1
Parking Spaces:	
View:	
Rental Price:	\$1,950
List PPSF:	\$3
Valuated Price:	\$213,000
Valuated PPSF:	\$281

*The above valuated price is a baseline figure that does not take into account any specific renovation, upgrade, split, merge, or deterioration of the unit.*



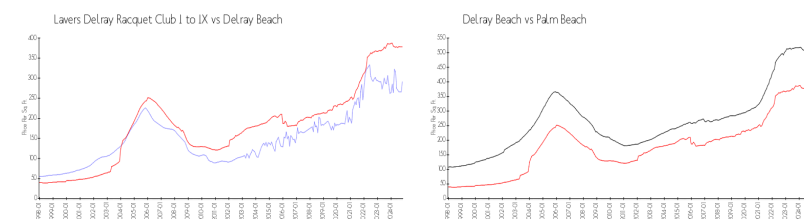
## Building Information

Number of units:	460
Number of active listings for rent:	16
Number of active listings for sale:	11
Building inventory for sale:	2%
Number of sales over the last 12 months:	19
Number of sales over the last 6 months:	7
Number of sales over the last 3 months:	6

## Building Association Information

Lavers Of Delray Racquet Club,  
Delray Racquet Club Association, Inc  
610 Egret Circle  
Delray Beach, FL 33444-7930  
(561) 276-3792

## Market Information



Lavers Delray Racquet Club I to IX:	\$291/sq. ft.	Delray Beach:	\$378/sq. ft.
Delray Beach:	\$378/sq. ft.	Palm Beach:	\$467/sq. ft.

## Inventory for Sale

Lavers Delray Racquet Club I to IX	2%
Delray Beach	3%
Palm Beach	4%

## Avg. Time to Close Over Last 12 Months

Lavers Delray Racquet Club I to IX	83 days
Delray Beach	58 days
Palm Beach	61 days