

Unit 2108 - Lavers Delray Racquet Club I to IX

2108 - 950 Egret Cir, Delray Beach, FL, Palm Beach 33444

Unit Information

MLS Number: A11669231
 Status: Active Under Contract
 Size: 1,175 Sq ft.
 Bedrooms: 2
 Full Bathrooms: 2
 Half Bathrooms:
 Parking Spaces: 1 Space, Guest Parking
 View:
 List Price: \$300,000
 List PPSF: \$255
 Valuated Price: \$337,000
 Valuated PPSF: \$287

The above valuated price is a baseline figure that does not take into account any specific renovation, upgrade, split, merge, or deterioration of the unit.

Building Information

Number of units: 460
 Number of active listings for rent: 16
 Number of active listings for sale: 10
 Building inventory for sale: 2%
 Number of sales over the last 12 months: 22
 Number of sales over the last 6 months: 11
 Number of sales over the last 3 months: 7

Building Association Information

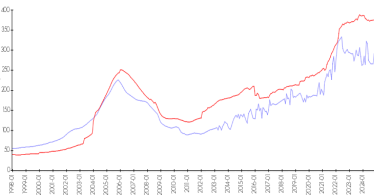
Lavers Of Delray Racquet Club,
 Delray Racquet Club Association, Inc
 610 Egret Circle
 Delray Beach, FL 33444-7930
 (561) 276-3792

Recent Sales

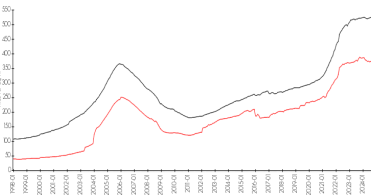
| Unit # | Size | Closing Date | Sale Price | PPSF |
|--------|-------------|--------------|------------|-------|
| 3202 | 1,290 sq ft | Jan 2025 | \$375,000 | \$291 |
| 3204 | 1,175 sq ft | Jan 2025 | \$355,000 | \$302 |
| 8303 | 1,175 sq ft | Jan 2025 | \$374,900 | \$319 |
| 5401 | 758 sq ft | Jan 2025 | \$192,500 | \$254 |
| 6103 | 1,175 sq ft | Dec 2024 | \$380,000 | \$323 |
| 8209 | 1,175 sq ft | Dec 2024 | \$282,500 | \$240 |

Market Information

Lavers Delray Racquet Club I to IX vs Delray Beach



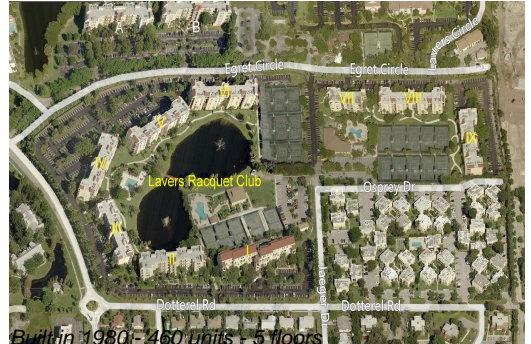
Delray Beach vs Palm Beach



Lavers Delray Racquet Club I to IX: \$285/sq. ft.
 Delray Beach: \$371/sq. ft.
 Delray Beach: \$371/sq. ft.
 Palm Beach: \$465/sq. ft.

Inventory for Sale

Lavers Delray Racquet Club I to IX: 2%
 Delray Beach: 3%
 Palm Beach: 4%



Avg. Time to Close Over Last 12 Months

| | |
|------------------------------------|---------|
| Lavers Delray Racquet Club I to IX | 84 days |
| Delray Beach | 59 days |
| Palm Beach | 62 days |