

Unit 108 Lighthouse Cir # E - Tequesta Trace

108 Lighthouse Cir # E - 101 Lighthouse Cir, Jupiter, FL, Palm Beach 33469

Unit Information

MLS Number: A11679108
 Status: Active
 Size: 1,790 Sq ft.
 Bedrooms: 3
 Full Bathrooms: 2
 Half Bathrooms: 1
 Parking Spaces: 1 Space, Assigned Parking, Guest Parking
 View:
 List Price: \$470,000
 List PPSF: \$263
 Valuated Price: \$535,000
 Valuated PPSF: \$274

The above valuated price is a baseline figure that does not take into account any specific renovation, upgrade, split, merge, or deterioration of the unit.

Building Information

Number of units: 134
 Number of active listings for rent: 0
 Number of active listings for sale: 4
 Building inventory for sale: 2%
 Number of sales over the last 12 months: 5
 Number of sales over the last 6 months: 3
 Number of sales over the last 3 months: 0

Building Association Information

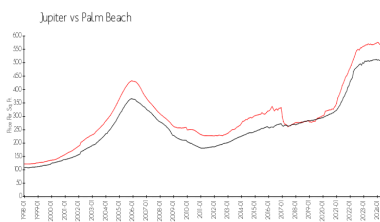
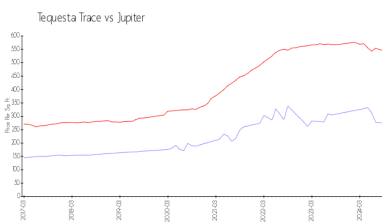
Tequesta Trace
 CONDOMINIUM ASSOCIATION
 Campbell Property Management
 401 Maplewood Drive Suite 23
 Jupiter, FL 33458
 Phone: 561-203-7910
 email: jupiter@campbellproperty.com

<https://www.tequestatracecondo.com/>

Recent Sales

Unit #	Size	Closing Date	Sale Price	PPSF
C	1,036 sq ft	Jul 2024	\$280,000	\$270
A	1,426 sq ft	Jul 2024	\$345,000	\$242
J	1,203 sq ft	Jun 2024	\$324,000	\$269
A	1,210 sq ft	May 2024	\$399,999	\$331
D	2,012 sq ft	Mar 2024	\$415,000	\$206

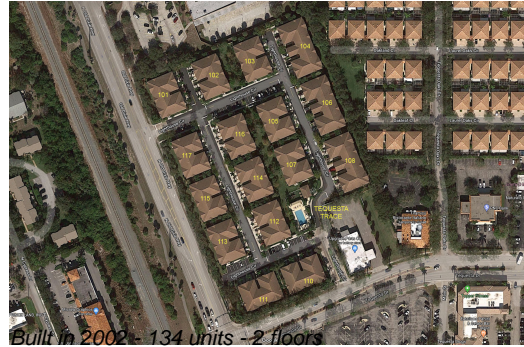
Market Information



Tequesta Trace: \$275/sq. ft.
 Jupiter: \$545/sq. ft.
 Jupiter: \$545/sq. ft.
 Palm Beach: \$466/sq. ft.

Inventory for Sale

Tequesta Trace 3%
 Jupiter 3%



Palm Beach 4%

Avg. Time to Close Over Last 12 Months

Tequesta Trace	29 days
Jupiter	71 days
Palm Beach	60 days