

Unit 2050 N Congress Ave # 102 - Presidential Golfview

2050 N Congress Ave # 102 - 1700 N Congress Ave, West Palm Beach, FL, Palm Beach 33401

Unit Information

MLS Number: A11683781
 Status: Active
 Size: 775 Sq ft.
 Bedrooms: 1
 Full Bathrooms: 1
 Half Bathrooms:
 Parking Spaces: 1 Space, Additional Spaces Available, Guest Parking
 View:
 List Price: \$149,900
 List PPSF: \$193
 Valuated Price: \$145,000
 Valuated PPSF: \$187

The above valuated price is a baseline figure that does not take into account any specific renovation, upgrade, split, merge, or deterioration of the unit.

Building Information

Number of units: 436
 Number of active listings for rent: 0
 Number of active listings for sale: 13
 Building inventory for sale: 2%
 Number of sales over the last 12 months: 13
 Number of sales over the last 6 months: 3
 Number of sales over the last 3 months: 1

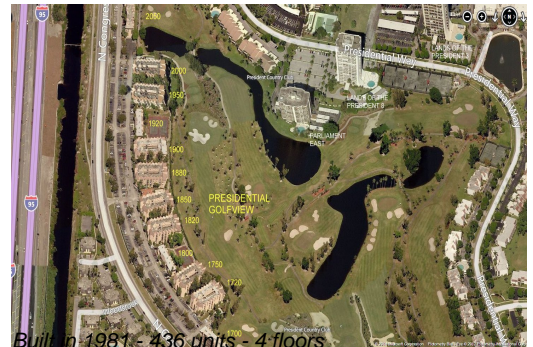
Building Association Information

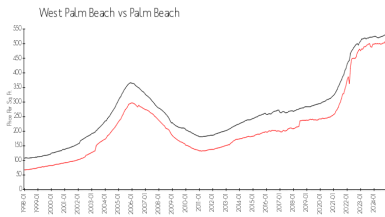
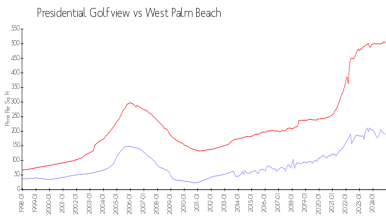
Presidential Golfview Condo
 West Palm Beach, FL 33401
 1700 N Congress Ave Apt A,
 (561) 684-7725
 1720 N Congress Ave Apt A,
 (561) 471-0981
 1750 N Congress Ave,
 (561) 688-0892
 1820 N Congress Ave Apt A,
 (561) 686-6342
 1850 N Congress Ave,
 (561) 686-1077
 1860 N Congress Ave
 (561) 686-4948
 1900 S Congress Ave Ste A,
 (561) 683-7512
 2000 N Congress Ave # A,
 (561) 684-1531

Recent Sales

Unit #	Size	Closing Date	Sale Price	PPSF
411	1,030 sq ft	Dec 2024	\$198,000	\$192
311	1,030 sq ft	Sep 2024	\$170,000	\$165
403	775 sq ft	Aug 2024	\$162,000	\$209
410	775 sq ft	Jun 2024	\$152,000	\$196
203	1,030 sq ft	Jun 2024	\$193,000	\$187
404	775 sq ft	Jun 2024	\$132,000	\$170

Market Information





Presidential	\$189/sq. ft.	West Palm Beach:	\$502/sq. ft.
Golfview:		Palm Beach:	\$465/sq. ft.
West Palm Beach:	\$502/sq. ft.		

Inventory for Sale

Presidential Golfview	3%
West Palm Beach	4%
Palm Beach	4%

Avg. Time to Close Over Last 12 Months

Presidential Golfview	37 days
West Palm Beach	56 days
Palm Beach	62 days