

Unit 313 WATERSIDE DR - Waterside Village

313 WATERSIDE DR - 100-808 Waterside Dr, Hypoluxo, FL, Palm Beach 33462

Unit Information

MLS Number: A11684398
 Status: Active
 Size: 1,152 Sq ft.
 Bedrooms: 2
 Full Bathrooms: 2
 Half Bathrooms: 1
 Parking Spaces:
 View:
 Rental Price: \$2,100
 List PPSF: \$2
 Valuated Price: \$263,000
 Valuated PPSF: \$228

The above valuated price is a baseline figure that does not take into account any specific renovation, upgrade, split, merge, or deterioration of the unit.

Building Information

Number of units: 412
 Number of active listings for rent: 3
 Number of active listings for sale: 8
 Building inventory for sale: 1%
 Number of sales over the last 12 months: 2
 Number of sales over the last 6 months: 1
 Number of sales over the last 3 months: 0

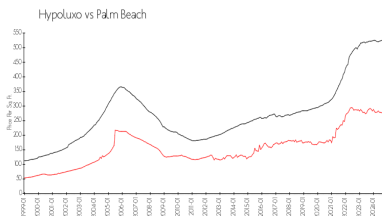
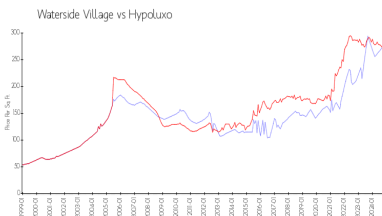
Building Association Information

Waterside Village of Palm Beach

Condominium Association, Inc.
 132 Waterside Drive
 Hypoluxo, FL 33462-6160
 Telephone (561) 582-6765
 Fax (561) 582-5368
 Property Manager & Staff:
 watersidevillage@bellsouth.net

<http://www.watersidevillage.com/>

Market Information



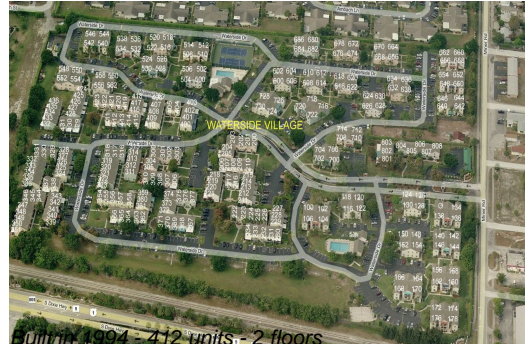
Waterside Village:	\$225/sq. ft.	Hypoluxo:	\$260/sq. ft.
Hypoluxo:	\$260/sq. ft.	Palm Beach:	\$464/sq. ft.

Inventory for Sale

Waterside Village 2%
 Hypoluxo 3%
 Palm Beach 4%

Avg. Time to Close Over Last 12 Months

Waterside Village 68 days
 Hypoluxo 62 days
 Palm Beach 62 days



Building 1904 - 412 units - 2 floors