

# Unit 714 - 200 East

714 - 200 E Palmetto Park Rd, Boca Raton, FL, Palm Beach 33432

## Unit Information

MLS Number: A11835375  
 Status: Active  
 Size: 2,545 Sq ft.  
 Bedrooms: 3  
 Full Bathrooms: 3  
 Half Bathrooms: 1  
 Parking Spaces: 2 Or More Spaces  
 View:  
 List Price: \$1,849,000  
 List PPSF: \$727  
 Valuated Price: \$1,955,000  
 Valuated PPSF: \$768

*The above valuated price is a baseline figure that does not take into account any specific renovation, upgrade, split, merge, or deterioration of the unit.*

## Building Information

Number of units: 115  
 Number of active listings for rent: 1  
 Number of active listings for sale: 6  
 Building inventory for sale: 5%  
 Number of sales over the last 12 months: 5  
 Number of sales over the last 6 months: 2  
 Number of sales over the last 3 months: 1

## Building Association Information

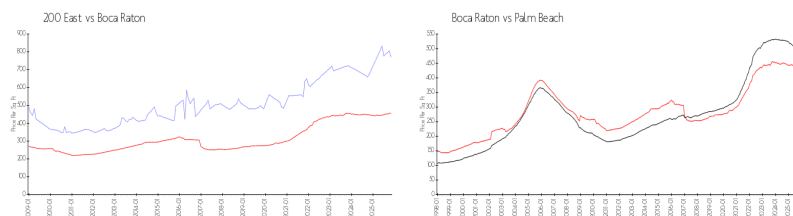
200 East Palmetto Park Condominium Association, 200 E Palmetto Park Road  
 Boca Raton, FL33432  
 (561) 368-9045

<https://>

## Recent Sales

Unit #	Size	Closing Date	Sale Price	PPSF
12	1,707 sq ft	Oct 2025	\$1,120,000	\$656
510	2,018 sq ft	Sep 2025	\$1,300,000	\$644
503	1,824 sq ft	Jun 2025	\$1,225,000	\$672
409	2,018 sq ft	Jun 2025	\$1,875,000	\$929
701	2,168 sq ft	Jun 2025	\$1,750,000	\$807

## Market Information

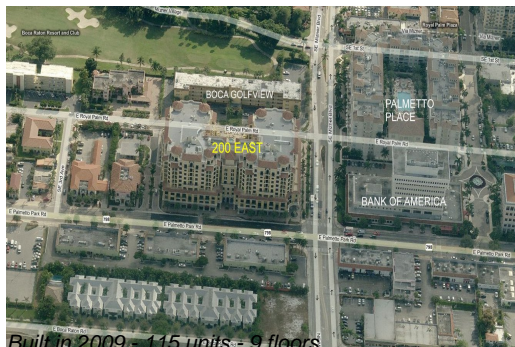


200 East:	\$770/sq. ft.	Boca Raton:	\$457/sq. ft.
Boca Raton:	\$457/sq. ft.	Palm Beach:	\$452/sq. ft.

## Inventory for Sale

200 East: 5%  
 Boca Raton: 3%  
 Palm Beach: 3%

## Avg. Time to Close Over Last 12 Months



200 East  
Boca Raton  
Palm Beach

87 days  
80 days  
77 days