

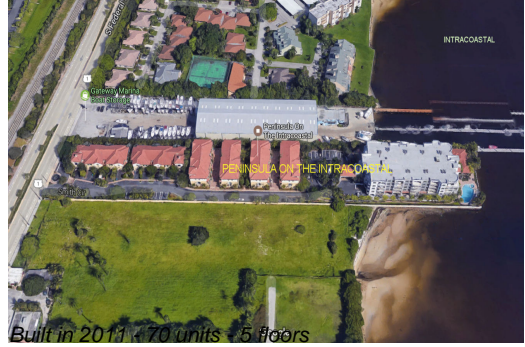
# Unit 2700 N Federal Hwy # 204 - Peninsula on the Intracoastal

2700 N Federal Hwy # 204 - 2670-2700 N Federal Hwy, Boynton Beach, FL, Palm Beach 33435

## Unit Information

MLS Number:	F10416801
Status:	Active
Size:	1,424 Sq ft.
Bedrooms:	2
Full Bathrooms:	2
Half Bathrooms:	0
Parking Spaces:	2 Or More Spaces,Covered Parking,Guest Parking
View:	Intracoastal View,Ocean View,Water View
List Price:	\$899,900
List PPSF:	\$632
Valuated Price:	\$753,000
Valuated PPSF:	\$545

The above valuated price is a baseline figure that does not take into account any specific renovation, upgrade, split, merge, or deterioration of the unit.



## Building Information

Number of units:	70
Number of active listings for rent:	0
Number of active listings for sale:	4
Building inventory for sale:	5%
Number of sales over the last 12 months:	3
Number of sales over the last 6 months:	2
Number of sales over the last 3 months:	2

## Building Association Information

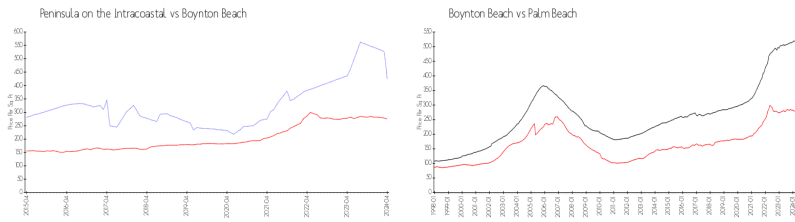
Peninsula on the Intracoastal  
561-740-3400

<http://peninsulaboynnton.com/>

## Recent Sales

Unit #	Size	Closing Date	Sale Price	PPSF
507	1,742 sq ft	Apr 2024	\$685,000	\$393
9	1,933 sq ft	Mar 2024	\$575,000	\$297
1	1,720 sq ft	Aug 2023	\$612,000	\$356

## Market Information



Peninsula on the Intracoastal:	\$425/sq. ft.	Boynton Beach:	\$276/sq. ft.
Boynton Beach:	\$276/sq. ft.	Palm Beach:	\$467/sq. ft.

## Inventory for Sale

Peninsula on the Intracoastal 6%

Boynton Beach	2%
Palm Beach	3%

### **Avg. Time to Close Over Last 12 Months**

Peninsula on the Intracoastal	1 days
Boynton Beach	48 days
Palm Beach	56 days