

Unit 8-D - Horizon

8-D - 600 Ocean Dr, Juno Beach, FL, Palm Beach 33408

Unit Information

MLS Number: F10422430
 Status: Active
 Size: 1,453 Sq ft.
 Bedrooms: 2
 Full Bathrooms: 2
 Half Bathrooms: 0
 Parking Spaces: 1 Space,Assigned Parking,Covered Parking
 View: Ocean View,Direct Ocean,Water View
 List Price: \$1,275,000
 List PPSF: \$877
 Valuated Price: \$1,211,000
 Valuated PPSF: \$833

The above valuated price is a baseline figure that does not take into account any specific renovation, upgrade, split, merge, or deterioration of the unit.

Building Information

Number of units: 46
 Number of active listings for rent: 0
 Number of active listings for sale: 6
 Building inventory for sale: 13%
 Number of sales over the last 12 months: 7
 Number of sales over the last 6 months: 3
 Number of sales over the last 3 months: 2

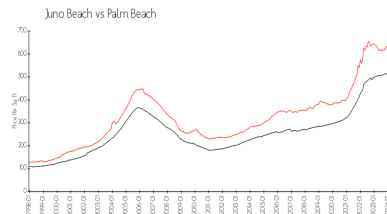
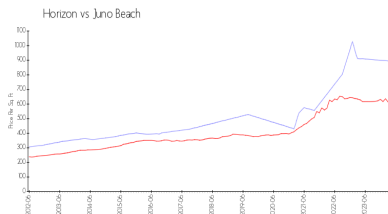
Building Association Information

Horizon Condominium Association
 Address: 600 Ocean Dr,
 Juno Beach, FL 33408,
 Phone: +1 561-627-4458

Recent Sales

Unit #	Size	Closing Date	Sale Price	PPSF
11a	2,158 sq ft	May 2023	\$2,000,000	\$927

Market Information



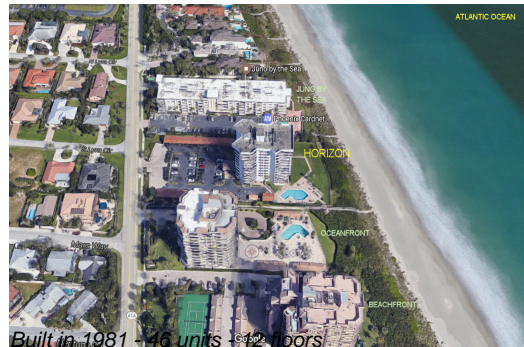
Horizon:	\$894/sq. ft.	Juno Beach:	\$612/sq. ft.
Juno Beach:	\$612/sq. ft.	Palm Beach:	\$467/sq. ft.

Inventory for Sale

Horizon: 13%
 Juno Beach: 2%
 Palm Beach: 3%

Avg. Time to Close Over Last 12 Months

Horizon: 43 days



Juno Beach
Palm Beach

93 days
56 days