

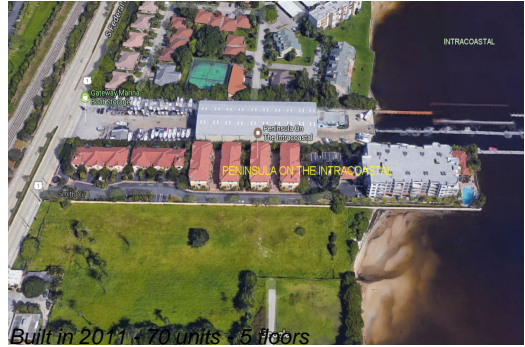
Unit 2700 N Federal Hwy # 507 - Peninsula on the Intracoastal

2700 N Federal Hwy # 507 - 2670-2700 N Federal Hwy, Boynton Beach, FL, Palm Beach 33435

Unit Information

MLS Number:	F10433103
Status:	Active
Size:	1,742 Sq. ft.
Bedrooms:	2
Full Bathrooms:	2
Half Bathrooms:	0
Parking Spaces:	Covered Parking, Guest Parking, Open Space Parking
View:	Intracoastal View, Water View
List Price:	\$799,000
List PPSF:	\$459
Valuated Price:	\$799,000
Valuated PPSF:	\$561

The above valuated price is a baseline figure that does not take into account any specific renovation, upgrade, split, merge, or deterioration of the unit.



Building Information

Number of units:	70
Number of active listings for rent:	0
Number of active listings for sale:	4
Building inventory for sale:	5%
Number of sales over the last 12 months:	3
Number of sales over the last 6 months:	2
Number of sales over the last 3 months:	2

Building Association Information

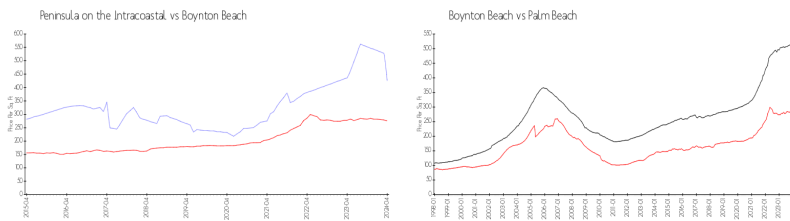
Peninsula on the Intracoastal
561-740-3400

<http://peninsulaboynnton.com/>

Recent Sales

Unit #	Size	Closing Date	Sale Price	PPSF
507	1,742 sq ft	Apr 2024	\$685,000	\$393
9	1,933 sq ft	Mar 2024	\$575,000	\$297
1	1,720 sq ft	Aug 2023	\$612,000	\$356

Market Information



Peninsula on the Intracoastal:	\$425/sq. ft.	Boynton Beach:	\$276/sq. ft.
Boynton Beach:	\$276/sq. ft.	Palm Beach:	\$467/sq. ft.

Inventory for Sale

Peninsula on the Intracoastal 6%

Boynton Beach	2%
Palm Beach	3%

Avg. Time to Close Over Last 12 Months

Peninsula on the Intracoastal	1 days
Boynton Beach	48 days
Palm Beach	56 days