

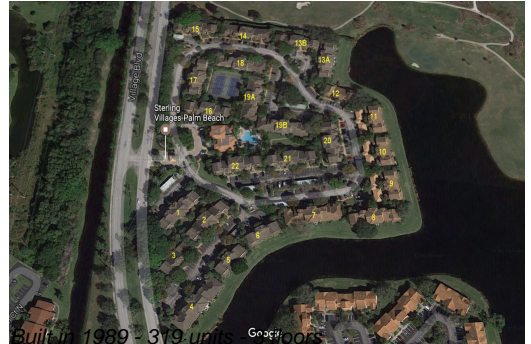
Unit 6102 Glenmoor Dr - Sterling Villages of Palm Beach Lakes

6102 Glenmoor Dr - 1101-22304 Glenmoor Dr, West Palm Beach, FL, Palm Beach 33409

Unit Information

| | |
|-----------------|------------|
| MLS Number: | F10450239 |
| Status: | Active |
| Size: | 850 Sq ft. |
| Bedrooms: | 1 |
| Full Bathrooms: | 1 |
| Half Bathrooms: | 0 |
| Parking Spaces: | |
| View: | |
| Rental Price: | \$1,750 |
| List PPSF: | \$2 |
| Valuated Price: | \$185,000 |
| Valuated PPSF: | \$218 |

The above valuated price is a baseline figure that does not take into account any specific renovation, upgrade, split, merge, or deterioration of the unit.



Building Information

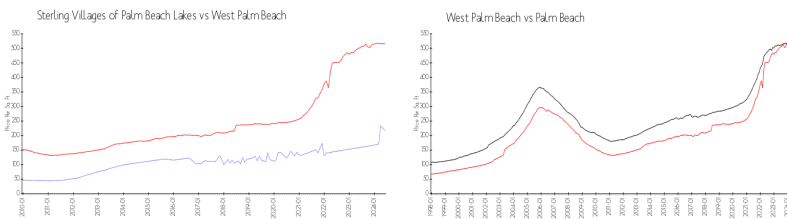
| | |
|--|-----|
| Number of units: | 319 |
| Number of active listings for rent: | 0 |
| Number of active listings for sale: | 10 |
| Building inventory for sale: | 3% |
| Number of sales over the last 12 months: | 19 |
| Number of sales over the last 6 months: | 12 |
| Number of sales over the last 3 months: | 4 |

Building Association Information

Sterling Villages-Palm Beach
 Address: 1100 Village Blvd,
 West Palm Beach, FL 33409,
 Phone: +1 561-471-9292

<http://www.thesterlingwpb.com/>

Market Information



| | | | |
|--|---------------|------------------|---------------|
| Sterling Villages of Palm Beach Lakes: | \$219/sq. ft. | West Palm Beach: | \$516/sq. ft. |
| West Palm Beach: | \$516/sq. ft. | Palm Beach: | \$474/sq. ft. |

Inventory for Sale

| | |
|---------------------------------------|----|
| Sterling Villages of Palm Beach Lakes | 3% |
| West Palm Beach | 3% |
| Palm Beach | 3% |

Avg. Time to Close Over Last 12 Months

| | |
|---------------------------------------|---------|
| Sterling Villages of Palm Beach Lakes | 37 days |
|---------------------------------------|---------|

West Palm Beach
Palm Beach

54 days
58 days