

Unit 2678 N Federal Hwy # 32 - Peninsula on the Intracoastal

2678 N Federal Hwy # 32 - 2670-2700 N Federal Hwy, Boynton Beach, FL, Palm Beach 33435

Unit Information

MLS Number: F10455774
 Status: Active
 Size: 1,822 Sq ft.
 Bedrooms: 3
 Full Bathrooms: 3
 Half Bathrooms: 1
 Parking Spaces: 2 Or More Spaces, Guest Parking
 View: Garden View
 List Price: \$625,000
 List PPSF: \$343
 Valuated Price: \$594,000
 Valuated PPSF: \$317

The above valuated price is a baseline figure that does not take into account any specific renovation, upgrade, split, merge, or deterioration of the unit.

Building Information

Number of units: 70
 Number of active listings for rent: 0
 Number of active listings for sale: 2
 Building inventory for sale: 2%
 Number of sales over the last 12 months: 3
 Number of sales over the last 6 months: 1
 Number of sales over the last 3 months: 0

Building Association Information

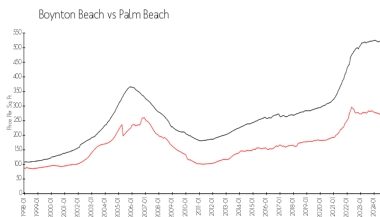
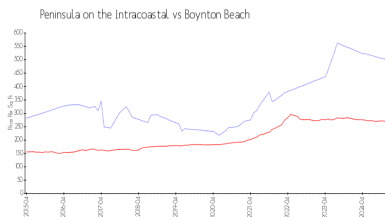
Peninsula on the Intracoastal
 561-740-3400

<http://peninsulaboynton.com/>

Recent Sales

Unit #	Size	Closing Date	Sale Price	PPSF
62	2,248 sq ft	Aug 2024	\$589,000	\$262
507	1,742 sq ft	Apr 2024	\$685,000	\$393
9	1,933 sq ft	Mar 2024	\$575,000	\$297

Market Information

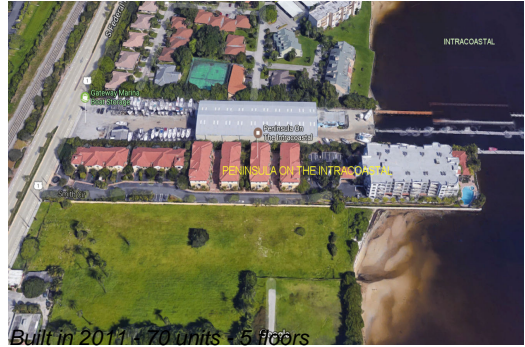


Peninsula on the Intracoastal:	\$500/sq. ft.	Boynton Beach:	\$267/sq. ft.
Boynton Beach:	\$267/sq. ft.	Palm Beach:	\$464/sq. ft.

Inventory for Sale

Peninsula on the Intracoastal: 3%
 Boynton Beach: 3%
 Palm Beach: 4%

Avg. Time to Close Over Last 12 Months



Peninsula on the Intracoastal
Boynton Beach
Palm Beach

48 days
52 days
62 days