

Unit 368 WATERSIDE DR - Waterside Village

368 WATERSIDE DR - 100-808 Waterside Dr, Hypoluxo, FL, Palm Beach 33462

Unit Information

MLS Number: F10461711
 Status: Active
 Size: 1,152 Sq ft.
 Bedrooms: 2
 Full Bathrooms: 2
 Half Bathrooms: 1
 Parking Spaces: 2 Or More Spaces
 View: Garden View
 List Price: \$285,000
 List PPSF: \$247
 Valuated Price: \$260,000
 Valuated PPSF: \$226

The above valuated price is a baseline figure that does not take into account any specific renovation, upgrade, split, merge, or deterioration of the unit.

Building Information

Number of units: 412
 Number of active listings for rent: 3
 Number of active listings for sale: 4
 Building inventory for sale: 0%
 Number of sales over the last 12 months: 2
 Number of sales over the last 6 months: 1
 Number of sales over the last 3 months: 1

Building Association Information

Waterside Village of Palm Beach

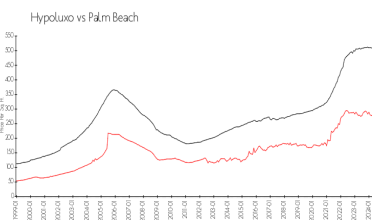
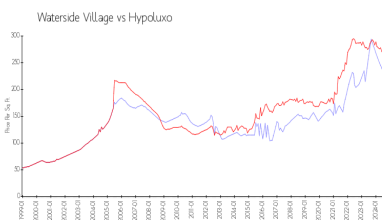
Condominium Association, Inc.
 132 Waterside Drive
 Hypoluxo, FL 33462-6160
 Telephone (561) 582-6765
 Fax (561) 582-5368
 Property Manager & Staff:
 watersidevillage@bellsouth.net

<http://www.watersidevillage.com/>

Recent Sales

Unit #	Size	Closing Date	Sale Price	PPSF
	850 sq ft	Oct 2024	\$215,000	\$253
	850 sq ft	Mar 2024	\$223,000	\$262

Market Information

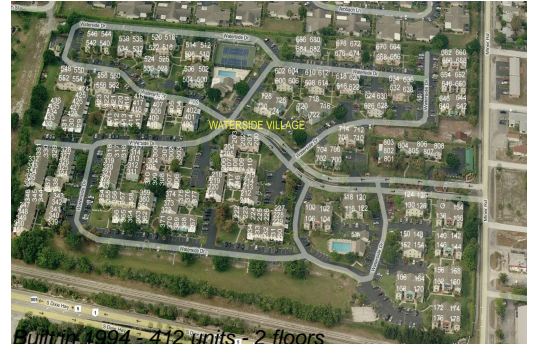


Waterside Village: \$223/sq. ft.
 Hypoluxo: \$261/sq. ft.

Hypoluxo: \$261/sq. ft.
 Palm Beach: \$466/sq. ft.

Inventory for Sale

Waterside Village: 1%
 Hypoluxo: 3%
 Palm Beach: 4%



Avg. Time to Close Over Last 12 Months

Waterside Village	64 days
Hypoluxo	66 days
Palm Beach	60 days