

# Unit 1880 N Congress Ave # 210 - Presidential Golfview

1880 N Congress Ave # 210 - 1700 N Congress Ave, West Palm Beach, FL, Palm Beach 33401

## Unit Information

MLS Number: F10471408  
 Status: Active  
 Size: 775 Sq ft.  
 Bedrooms: 1  
 Full Bathrooms: 1  
 Half Bathrooms: 0  
 Parking Spaces: 1 Space  
 View: Other View  
 List Price: \$165,000  
 List PPSF: \$213  
 Valuated Price: \$137,000  
 Valuated PPSF: \$177

*The above valuated price is a baseline figure that does not take into account any specific renovation, upgrade, split, merge, or deterioration of the unit.*

## Building Information

Number of units: 436  
 Number of active listings for rent: 0  
 Number of active listings for sale: 14  
 Building inventory for sale: 3%  
 Number of sales over the last 12 months: 15  
 Number of sales over the last 6 months: 5  
 Number of sales over the last 3 months: 0

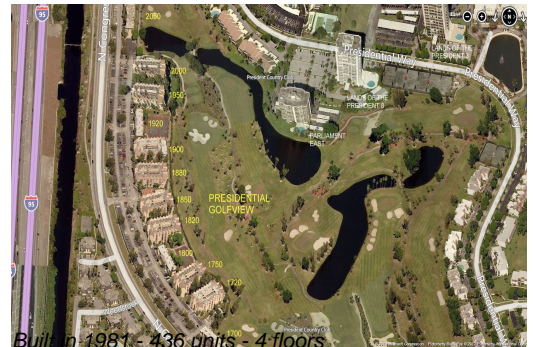
## Building Association Information

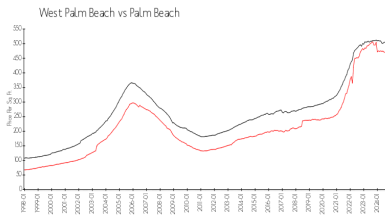
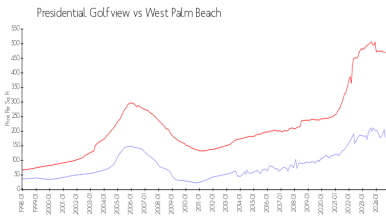
Presidential Golfview Condo  
 West Palm Beach, FL 33401  
 1700 N Congress Ave Apt A,  
 (561) 684-7725  
 1720 N Congress Ave Apt A,  
 (561) 471-0981  
 1750 N Congress Ave,  
 (561) 688-0892  
 1820 N Congress Ave Apt A,  
 (561) 686-6342  
 1850 N Congress Ave,  
 (561) 686-1077  
 1860 N Congress Ave  
 (561) 686-4948  
 1900 S Congress Ave Ste A,  
 (561) 683-7512  
 2000 N Congress Ave # A,  
 (561) 684-1531

## Recent Sales

Unit #	Size	Closing Date	Sale Price	PPSF
311	1,030 sq ft	Sep 2024	\$170,000	\$165
403	775 sq ft	Aug 2024	\$162,000	\$209
410	775 sq ft	Jun 2024	\$152,000	\$196
203	1,030 sq ft	Jun 2024	\$193,000	\$187
404	775 sq ft	Jun 2024	\$132,000	\$170

## Market Information





Presidential	\$177/sq. ft.	West Palm Beach:	\$470/sq. ft.
Golfview:		Palm Beach:	\$466/sq. ft.
West Palm Beach:	\$470/sq. ft.		

**Inventory for Sale**

Presidential Golfview	3%
West Palm Beach	4%
Palm Beach	4%

**Avg. Time to Close Over Last 12 Months**

Presidential Golfview	37 days
West Palm Beach	55 days
Palm Beach	60 days